



TEST REPORT N°: RIK-16DE0422HTSP

## TEST REPORT

To:		To:	-
Attn:		Attn:	-
Address:		Address:	-
Fax/E-mail:		Fax/E-mail:	-

This document includes: 98 pages

Factory name:			
Location:		Sample No:	NST/CBV161693
	Start date:	2016-12-07	
	Finish date:	2016-12-23	
	Standards used: (Date):	EN 60335-1:2012+A11:2014 EN 60335-2-8: 2003 +A1: 2005 +A2:2008 EN 62233:2008	
	Clauses examined:	All Clause	
	Re-testing:	None	
Shaver/ YD-398, YD-388, YD-368, YD-2088, YD-378, YD-8088		Remark / Note:	None
<b>CONCLUSION: The sample satisfies to the clauses examined.</b>			
Test done by, (name, function, signature ) Rex ZHOU Project engineer <i>Rex Zhou</i>		Approved by, (name, function, signature ) Bluce MA project manager <i>Bluce Ma</i>	
<small>This report is for your exclusive use. Any copying or replication of this report to or for any other person or entity, or use of our name or trademark, is permitted only with our prior written permission. This report sets forth our findings solely with respect to the test samples identified herein. The results set forth in this report are not indicative or representative of the quality or characteristics of the lot from which a test sample was taken or any similar or identical product unless specifically and expressly noted. Our report includes all of the tests requested by you and the results thereof based upon the information that you provided to us. You have 60 days from date of issuance of this report to notify us of any material error or omission caused by our negligence, provided, however, that such notice shall be in writing and shall specifically address the issue you wish to raise. A failure to raise such issue within the prescribed time shall constitute your unqualified acceptance of the completeness of this report, the tests conducted and the correctness of the report contents. Unless specific mention, the uncertainty of measurement has been explicitly taken into account to declare the compliance or non-compliance to the specification.</small>			



**TEST REPORT N°: RIK-16DE0422HTSP**

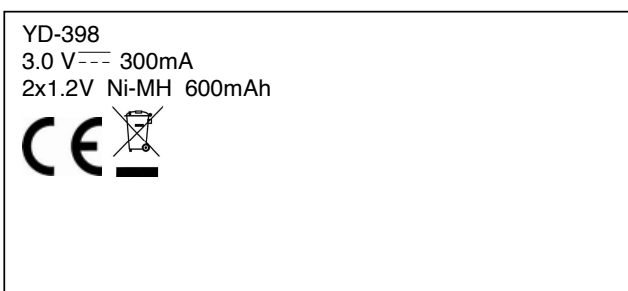
IEC 60335-2-8			
Clause	Requirement - Test	Result - Remark	Verdict

**HISTORICAL OF SAMPLE RECEIVED**

LCIE CHINA RECORDED N°	DETAIL OF THE SAMPLE	SPECIAL REMARKS
NST/CBV161693	Original sample	None

**COPY OF RATING PLATE:**

**Marked on the shaver**



Other models are same as the above one except the model name.

**Marking on the adaptor**





**TEST REPORT N°: RIK-16DE0422HTSP**

IEC 60335-2-8			
Clause	Requirement - Test	Result - Remark	Verdict

NOTE 1: Only marking and instruction sheet in English were checked and validated during this examination. The text required by the standard should be translated into the official language of the country where the appliance will be sold.

NOTE 2: Shaver for household and indoor use only, the appliance supplied by certified SELV adaptor.  
There are six models YD-398, YD-388, YD-368, YD-2088, YD-378, YD-8088 in this report, and they are all the same except the model names.  
After check, full tests are performed on model YD-398.  
Declaration for the other model

After reviewed, the samples fulfilled the requirements of the standards.

NOTE 3: Appendix 1: EU Group differences and EN 60335-2-8:2003+A1:2005+A2:2008 used in conjunction with EN 60335-1:2012 and EN 62233:2008

Appendix 2: A11 :2014 of EN 60335-1 :2012



TEST REPORT N°: RIK-16DE0422HTSP

IEC 60335-2-8			
Clause	Requirement - Test	Result - Remark	Verdict

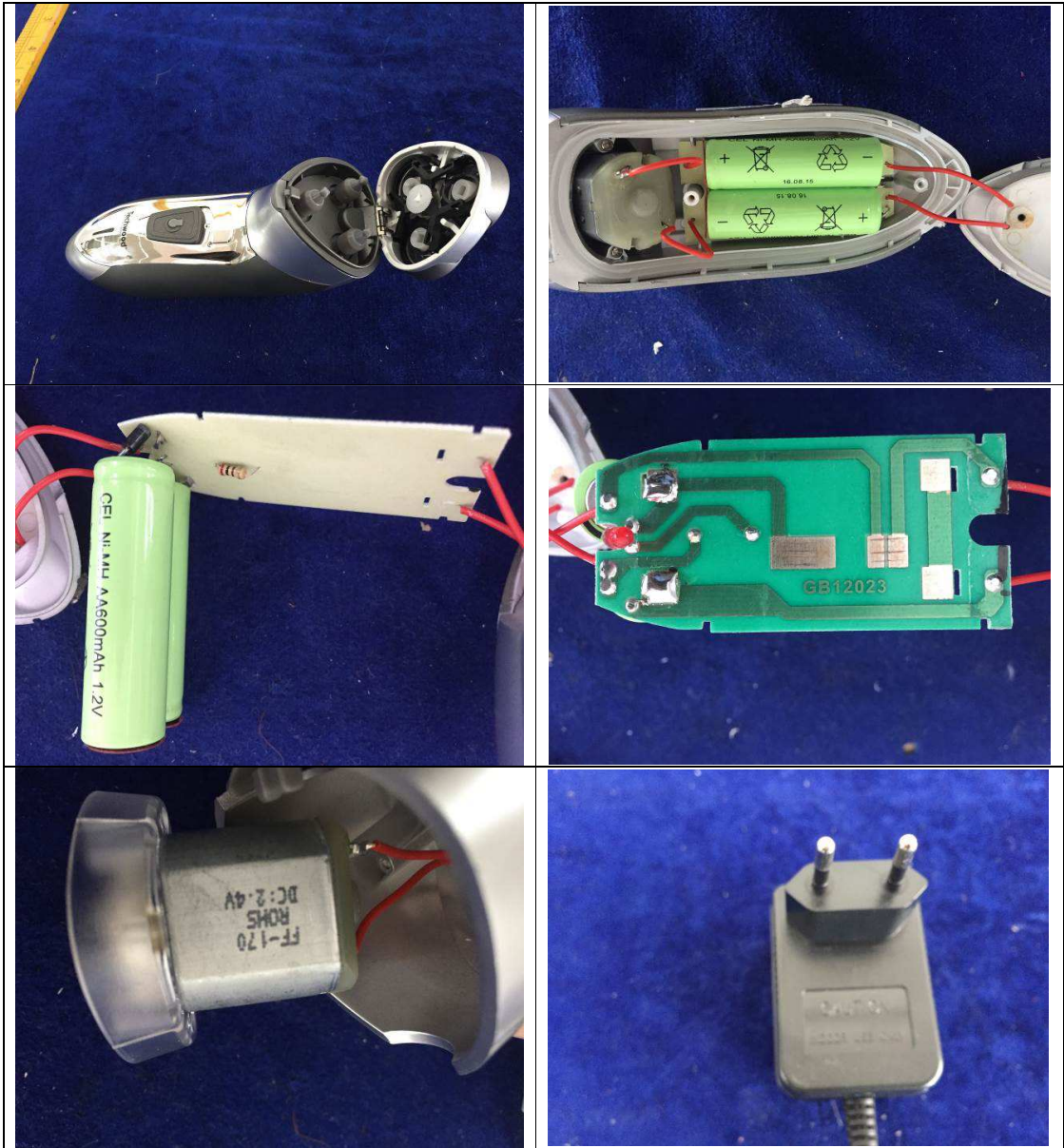
Photo of tested appliance :





TEST REPORT N°: RIK-16DE0422HTSP

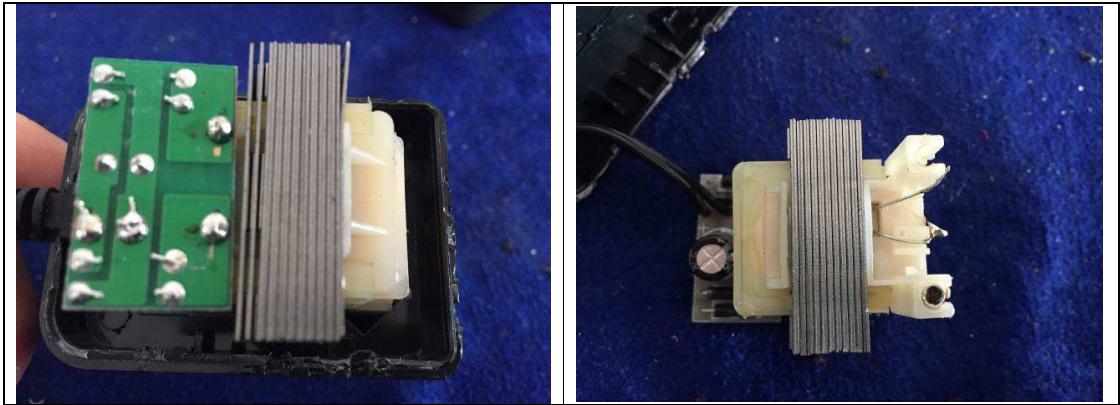
IEC 60335-2-8			
Clause	Requirement - Test	Result - Remark	Verdict





TEST REPORT N°: RIK-16DE0422HTSP

IEC 60335-2-8			
Clause	Requirement - Test	Result - Remark	Verdict



**TEST REPORT N°: RIK-16DE0422HTSP**

IEC 60335-2-8			
Clause	Requirement - Test	Result - Remark	Verdict

<b>Test item particulars</b>		Shaver
Nature of supply .....	:	Single phase
Class of protection against electric shock .....	:	Class II
Degree of protection against moisture .....	:	IPX0
Type of cord attachment .....	:	Direct plug-in adaptor
Portable appliances .....	:	Yes
Fixed appliances .....	:	No
Switch .....	:	Yes
Thermostat sensitive to the room air temperature .....	:	No
Thermostat .....	:	No
Thermostat without an OFF position .....	:	No
Self-resetting thermal cut-out .....	:	No
Non-self-resetting thermal cut-out .....	:	No
Contact opening > 3 mm in each pole .....	:	No
Thermal link .....	:	No
Electronic circuit .....	:	Yes
Programmer, timer, switching devices .....	:	No
Appliances - with supply cord .....	:	No
- with supply cord fitted with a plug .....	:	No
Motor with capacitor in auxiliary winding .....	:	No
Series motors incorporated .....	:	No
Automatic control in flexible cable or cord .....	:	No
Detachable part with earth connector .....	:	No
Appliance inlet provided .....	:	Yes
Mercury switch provided .....	:	No
Appliances intended to be operated unattended .....	:	Yes for battery charge function
Protection against effects of covering .....	:	No
Ventilating units .....	:	No
Used in vehicles or on board ships or aircraft .....	:	No
Used in tropical countries .....	:	No
Used in presence of combustible dust eg barns or stables .....	:	No

Possible test case verdicts:	
- test object does meet the requirement:	P (Pass)
- test case does not apply to the test object:	N/A (Not applicable)
- test object does not meet the requirement:	F (Fail)
- test object does not demand	ND (Not demanded)
General remarks:	
"(See remark #)" refers to a remark appended to the report. Throughout this report a comma is used as the decimal separator.	



**TEST REPORT N°: RIK-16DE0422HTSP**

IEC 60335-2-8			
Clause	Requirement - Test	Result - Remark	Verdict
5	GENERAL CONDITIONS FOR THE TESTS		--
	Tests performed according to clause 5, e.g. nature of supply, sequence of testing, etc.	50 Hz	P
5.8.2	Appliances with different rated voltages are assumed to have different voltage ranges. (IEC 60335-2-8)	230-240 V	P
6	CLASSIFICATION		--
6.1	Protection against electric shock: Class 0, 0I, I, II, III.....	Class II	P
	Animal shearers shall be class I, class II or class III. (IEC 60335-2-8)		N/A
	Washable shavers and wet shavers shall be class II or class III. (IEC 60335-2-8)		N/A
	Other appliances having a rated voltage not exceeding 150 V shall be of class 0, class I, class II or class III. (IEC 60335-2-8)		N/A
	Other appliances shall be class II or class III. (IEC 60335-2-8)	Class II	P
6.2	Protection against harmful ingress of water	IPX0	N/A
	Washable shavers and wet shavers are at least IPX7. (IEC 60335-2-8)		N/A
	Parts intended to be fixed; transformers etc. are at least IPX4. (IEC 60335-2-8)		N/A
7	MARKING AND INSTRUCTIONS		--
7.1	Rated voltage or voltage range (V).....	230-240V~ for adaptor Shaver: 3 V---	P
	Symbol for nature of supply, or.....	~	P
	Rated frequency (Hz) .....	50 Hz	P
	Rated power input (W), or .....		N/A
	Rated current (A) .....	Refer to marking label	P
	Manufacturer's or responsible vendor's name, trademark or identification mark.....	Refer to marking label	P
	Model or type reference.....	Refer to marking label	P
	Symbol IEC 60417-5172, for class II appliances	Marked on approved adaptor	P
	IP number, other than IPX0.....	IPX0	N/A
	Symbol IEC 60417-5180, for class III appliances, unless		N/A
	the appliance is operated by batteries only		N/A


**TEST REPORT N°: RIK-16DE0422HTSP**

IEC 60335-2-8			
Clause	Requirement - Test	Result - Remark	Verdict
	Symbol IEC 60417-5036, for the enclosure of electrically-operated water valves in external hose-sets for connection of an appliance to the water mains, if the working voltage exceeds extra-low voltage		N/A
	Symbol IEC 60417-5574 for washable shavers. (IEC 60335-2-8)		N/A
	Symbol IEC 60417-5582 for wet shavers. (IEC 60335-2-8)		N/A
7.2	Warning for stationary appliances for multiple supply		N/A
	Warning placed in vicinity of terminal cover		N/A
7.3	Range of rated values marked with the lower and upper limits separated by a hyphen	Adaptor: 230-240V	P
	Different rated values marked with the values separated by an oblique stroke		N/A
7.4	Appliances adjustable for different rated voltages, the voltage setting is clearly discernible		N/A
	Requirement met if frequent changes are not required and the rated voltage to which the appliance is to be adjusted is determined from a wiring diagram		N/A
7.5	Appliances with more than one rated voltage or one or more rated voltage ranges, marked with rated input or rated current for each rated voltage or range, unless		N/A
	the power input is related to the arithmetic mean value of the rated voltage range		P
	Relation between marking for upper and lower limits of rated power input or rated current and voltage is clear		N/A
7.6	Correct symbols used		P
	Symbol for nature of supply placed next to rated voltage		P
	Symbol for class II appliances placed unlikely to be confused with other marking		P
	Units of physical quantities and their symbols according to international standardized system		P



**TEST REPORT N°: RIK-16DE0422HTSP**

IEC 60335-2-8			
Clause	Requirement - Test	Result - Remark	Verdict
7.7	Connection diagram fixed to appliances to be connected to more than two supply conductors and appliances for multiple supply, unless correct mode of connection is obvious		N/A
7.8	Except for type Z attachment, terminals for connection to the supply mains indicated as follows:		--
	- marking of terminals exclusively for the neutral conductor (letter N)		N/A
	- marking of protective earthing terminals (symbol IEC 60417-5019)		N/A
	- marking not placed on removable parts		N/A
7.9	Marking or placing of switches which may cause a hazard		P
7.10	Indications of switches on stationary appliances and controls on all appliances by use of figures, letters or other visual means .....	Figures:0,1	P
	This applies also to switches which are part of a control		P
	If figures are used, the off position indicated by the figure 0		P
	The figure 0 indicates only OFF position, unless no confusion with the OFF position		P
7.11	Indication for direction of adjustment of controls		N/A
7.12	Instructions for safe use provided		P
	Details concerning precautions during user maintenance		N/A
	The instructions state that:		--
	- the appliance is not to be used by persons (including children) with reduced physical, sensory or mental capabilities, or lack of experience and knowledge, unless they have been given supervision or instruction	Replaced by EN 60335-1:2012	N/A
	- children being supervised not to play with the appliance	Replaced by EN 60335-1:2012	N/A
	For a part of class III construction supplied from a detachable power supply unit, the instructions state that the appliance is only to be used with the unit provided		P


**TEST REPORT N°: RIK-16DE0422HTSP**

IEC 60335-2-8			
Clause	Requirement - Test	Result - Remark	Verdict
	Instructions for class III appliances state that it must only be supplied at SELV, unless		N/A
	it is a battery-operated appliance, the battery being charged outside the appliance		N/A
	The instructions for animal clippers shall state that the appliance is intended for trimming purposes only. (IEC 60335-2-8)		N/A
	If symbol IEC 60417-5574 or -5582 is used, its meaning shall be explained. (IEC 60335-2-8)		N/A
	Shavers, other than washable shavers or wet shavers, shall include: WARNING: Keep the appliance dry. (IEC 60335-2-8)		P
	Washable shavers with detachable interconnection cords shall include: WARNING: Detach the hand-held part from the supply cord before cleaning it in water. (IEC 60335-2-8)		N/A
7.12.1	Sufficient details for installation supplied		N/A
	For an appliance intended to be permanently connected to the water mains and not connected by a hose-set, this is stated		N/A
	The installation instructions for washable shavers and wet shavers, other than those classified IPX7, shall state that the parts that have to be fixed must be installed so they cannot fall into water. (IEC 60335-2-8)		N/A
7.12.2	Stationary appliances not fitted with means for disconnection from the supply mains having a contact separation in all poles that provide full disconnection under overvoltage category III, the instructions state that means for disconnection must be incorporated in the fixed wiring in accordance with the wiring rules		N/A
7.12.3	Insulation of the fixed wiring in contact with parts exceeding 50 K during clause 11; instructions state that the fixed wiring must be protected		N/A
7.12.4	Instructions for built-in appliances:		--
	- dimensions of space		N/A
	- dimensions and position of supporting and fixing		N/A
	- minimum distances between parts and surrounding structure		N/A



**TEST REPORT N°: RIK-16DE0422HTSP**

IEC 60335-2-8			
Clause	Requirement - Test	Result - Remark	Verdict
	- minimum dimensions of ventilating openings and arrangement		N/A
	- connection to supply mains and interconnection of separate components		N/A
	- allow disconnection of the appliance after installation, by accessible plug or a switch in the fixed wiring, unless		N/A
	a switch complying with 24.3		N/A
7.12.5	Replacement cord instructions, type X attachment with a specially prepared cord		N/A
	Replacement cord instructions, type Y attachment		N/A
	Replacement cord instructions, type Z attachment		N/A
7.12.6	Caution in the instructions for appliances incorporating a non-self-resetting thermal cut-out that is reset by disconnection of the supply mains, if this cut-out is required to comply with the standard		N/A
7.12.7	Instructions for fixed appliances stating how the appliance is to be fixed		N/A
7.12.8	Instructions for appliances connected to the water mains:		--
	- max. inlet water pressure (Pa) .....		N/A
	- min. inlet water pressure, if necessary (Pa) .....		N/A
	Instructions concerning new and old hose-sets for appliances connected to the water mains by detachable hose-sets		N/A
7.13	Instructions and other texts in an official language	English	P
7.14	Marking clearly legible and durable, rubbing test as specified		P
	The height of symbol IEC 60417-5574 (2002-10) and symbol IEC 60417-5582 (2002-10) shall be at least 5 mm. (IEC 60335-2-8)		N/A
7.15	Markings on a main part		P
	Marking clearly discernible from the outside, if necessary after removal of a cover		P
	For portable appliances, cover can be removed or opened without a tool		P
	For stationary appliances, name, trademark or identification mark and model or type reference visible after installation		N/A



**TEST REPORT N°: RIK-16DE0422HTSP**

IEC 60335-2-8			
Clause	Requirement - Test	Result - Remark	Verdict
	For fixed appliances, name, trademark or identification mark and model or type reference visible after installation according to the instructions		N/A
	Indications for switches and controls placed on or near the components. Marking not on parts which can be positioned or repositioned in such a way that the marking is misleading		P
7.16	Marking of a possible replaceable thermal link or fuse link clearly visible with regard to replacing the link		N/A
8	PROTECTION AGAINST ACCESS TO LIVE PARTS		--
8.1	Adequate protection against accidental contact with live parts		P
8.1.1	Requirement applies for all positions, detachable parts removed		P
	Lamps behind a detachable cover not removed, if conditions met		N/A
	Insertion or removal of lamps, protection against contact with live parts of the lamp cap		N/A
	Use of test probe B of IEC 61032, with a force not exceeding 1 N: no contact with live parts		P
	Use of test probe B of IEC 61032 through openings, with a force of 20N: no contact with live parts		P
8.1.2	Use of test probe 13 of IEC 61032, with a force not exceeding 1 N, through openings in class 0 appliances and class II appliances/constructions: no contact with live parts		P
	Test probe 13 also applied through openings in earthed metal enclosures having a non-conductive coating: no contact with live parts		N/A
8.1.3	For appliances other than class II, use of test probe 41 of IEC 61032, with a force not exceeding 1 N: no contact with live parts of visible glowing heating elements		N/A
8.1.4	Accessible part not considered live if:		--
	- safety extra-low a.c. voltage: peak value not exceeding 42.4 V		N/A
	- safety extra-low d.c. voltage: not exceeding 42.4 V	Output of adaptor, certified component	P
	- or separated from live parts by protective impedance		N/A


**TEST REPORT N°: RIK-16DE0422HTSP**

IEC 60335-2-8			
Clause	Requirement - Test	Result - Remark	Verdict
	If protective impedance: d.c. current not exceeding 2 mA, and		N/A
	a.c. peak value not exceeding 0.7 mA		N/A
	- for peak values over 42.4 V up to and including 450 V, capacitance not exceeding 0,1 $\mu$ F		N/A
	- for peak values over 450 V up to and including 15 kV, discharge not exceeding 45 $\mu$ C		N/A
	- for peak values over 15kV, the energy in the discharge not exceeding 350 mJ		N/A
8.1.5	Live parts protected at least by basic insulation before installation or assembly:		--
	- built-in appliances		N/A
	- fixed appliances		N/A
	- appliances delivered in separate units		N/A
8.2	Class II appliances and constructions constructed so that there is adequate protection against accidental contact with basic insulation and metal parts separated from live parts by basic insulation only	Adaptor	P
	Only possible to touch parts separated from live parts by double or reinforced insulation		P
9	STARTING OF MOTOR-OPERATED APPLIANCES		--
	Requirements and tests are specified in part 2 when necessary		N/A
10	POWER INPUT AND CURRENT		--
10.1	Power input at normal operating temperature, rated voltage and normal operation not deviating from rated power input by more than shown in table 1 ...:	(see appended table)	N/A
	Test carried out at upper and lower limits of the ranges for appliances with one or more rated voltage ranges, unless		N/A
	the rated power input is related to the arithmetic mean value		N/A
10.2	Current at normal operating temperature, rated voltage and normal operation not deviating from rated current by more than shown in table 2 .....	(see appended table)	P
	Test carried out at upper and lower limits of the ranges for appliances with one or more rated voltage ranges, unless		N/A



**TEST REPORT N°: RIK-16DE0422HTSP**

IEC 60335-2-8			
Clause	Requirement - Test	Result - Remark	Verdict
	the rated current is related to the arithmetic mean value of the range		P
11	HEATING		--
11.1	No excessive temperatures in normal use		P
11.2	The appliance is held, placed or fixed in position as described .....	Hand-held	P
11.3	Temperature rises, other than of windings, determined by thermocouples		P
	Temperature rises of windings determined by resistance method, unless		N/A
	the windings are non-uniform or it is difficult to make the necessary connections	DC Motor, transformer in adaptor	P
11.4	Heating appliances operated under normal operation at 1.15 times rated power input (W) .....		N/A
11.5	Motor-operated appliances operated under normal operation at most unfavourable voltage between 0.94 and 1.06 times rated voltage (V) .....	0,94x100=94,0V, 1,06x240=254,4 V	P
11.6	Combined appliances operated under normal operation at most unfavourable voltage between 0.94 and 1.06 times rated voltage (V) .....		N/A
11.7	Appliances intended for household use only are operated continuously for 10 min. (IEC 60335-2-8)	Considered together with the requirements of Annex B  Test 1: battery was charged for 24 h, the battery being initially discharged to such an extent that the appliance can't operate;  Test 2: supplied by its fully charged battery, operated for 10 min;  Test 3: supplied from the supply mains through its battery charger, operated for 10 min	P
	Animal shearers are operated until steady conditions are established. (IEC 60335-2-8)		N/A
	Animal clippers and other appliances are operated for 10 min followed by a rest period of 10 min. This cycle of operation is repeated until steady conditions are established. (IEC 60335-2-8)		N/A



**TEST REPORT N°: RIK-16DE0422HTSP**

IEC 60335-2-8			
Clause	Requirement - Test	Result - Remark	Verdict
11.8	Temperature rises monitored continuously and not exceeding the values in table 3 .....	(see appended table)	P
	If the temperature rise of a motor winding exceeds the value of table 3, or		P
	if there is doubt with regard to classification of insulation,		N/A
	tests of Annex C are carried out		N/A
	Sealing compound does not flow out		P
	Protective devices do not operate, except		P
	components in protective electronic circuits tested for the number of cycles specified in 24.1.4		N/A
	The temperature rise of parts that are in contact with skin or hair in normal use, or are held in the hand, shall not exceed the limits specified for handles which are continuously held in normal use. (IEC 60335-2-8)		P
13	LEAKAGE CURRENT AND ELECTRIC STRENGTH AT OPERATING TEMPERATURE		--
13.1	Leakage current not excessive and electric strength adequate		P
	Heating appliances operated at 1.15 times the rated power input (W) .....		N/A
	Motor-operated appliances and combined appliances supplied at 1.06 times the rated voltage (V).....	254,4V	P
	Protective impedance and radio interference filters disconnected before carrying out the tests		N/A
13.2	For class 0, class II and class III appliances, leakage current measured by means of the circuit described in figure 4 of IEC 60990		P
	For other appliances, a low impedance ammeter may be used		N/A
	Leakage current measurements .....	(see appended table)	P
13.3	The appliance is disconnected from the supply		P
	Electric strength tests according to table 4.....	(see appended table)	P
	No breakdown during the tests		P
14	TRANSIENT OVERVOLTAGES		--
	Appliances withstand the transient over-voltages to which they may be subjected		N/A



**TEST REPORT N°: RIK-16DE0422HTSP**

IEC 60335-2-8			
Clause	Requirement - Test	Result - Remark	Verdict
	Clearances having a value less than specified in table 16 subjected to an impulse voltage test, the test voltage specified in table 6 .....	(see appended table)	N/A
	No flashover during the test, unless		N/A
	of functional insulation if the appliance complies with clause 19 with the clearance short-circuited		N/A
15	MOISTURE RESISTANCE		--
15.1	Enclosure provides the degree of moisture protection according to classification of the appliance		P
	Compliance checked as specified in 15.1.1, taking into account 15.1.2, followed by the electric strength test of 16.3		P
	No trace of water on insulation which can result in a reduction of clearances or creepage distances below values specified in clause 29		P
15.1.1	Appliances, other than IPX0, subjected to tests as specified in IEC 60529.....	IPX0	N/A
	Water valves containing live parts in external hoses for connection of an appliance to the water mains tested as specified for IPX7 appliances		N/A
15.1.2	Hand-held appliance turned continuously through the most unfavourable positions during the test		N/A
	Built-in appliances installed according to the instructions		N/A
	Appliances placed or used on the floor or table placed on a horizontal unperforated support		N/A
	Appliances normally fixed to a wall and appliances with pins for insertion into socket-outlets are mounted on a wooden board		N/A
	For IPX3 appliances, the base of wall mounted appliances is placed at the same level as the pivot axis of the oscillating tube		N/A
	For IPX4 appliances, the horizontal centre line of the appliance is aligned with the pivot axis of the oscillating tube, and		N/A
	for appliances normally used on the floor or table, the movement is limited to two times 90° for a period of 5 min, the support being placed at the level of the pivot axis of the oscillating tube		N/A


**TEST REPORT N°: RIK-16DE0422HTSP**

IEC 60335-2-8			
Clause	Requirement - Test	Result - Remark	Verdict
	Wall-mounted appliances, take into account the distance to the floor stated in the instructions		N/A
	Appliances normally fixed to a ceiling are mounted underneath a horizontal unperforated support, the pivot axis of the oscillating tube located at the level of the underside of the support, and		N/A
	for IPX4 appliances, the movement of the tube is limited to two times 90° from the vertical for a period of 5 min		N/A
	Appliances with type X attachment fitted with a flexible cord as described		N/A
	Detachable parts subjected to the relevant treatment with the main part		N/A
	However, if a part has to be removed for user maintenance and a tool is needed, this part is not removed		N/A
15.2	Spillage of liquid does not affect the electrical insulation		N/A
	Appliances with type X attachment fitted with a flexible cord as described		N/A
	Appliances incorporating an appliance inlet tested with or without an connector, whichever is most unfavourable		N/A
	Detachable parts are removed		N/A
	Overfilling test with additional amount of water, over a period of 1 min (l).....:		N/A
	The appliance withstands the electric strength test of 16.3		N/A
	No trace of water on insulation that can result in a reduction of clearances or creepage distances below values specified in clause 29		N/A
15.3	Appliances proof against humid conditions		P
	Checked by test Cab: Damp heat steady state in IEC 60068-2-78		P
	Detachable parts removed and subjected, if necessary, to the humidity test with the main part		P
	Humidity test for 48 h in a humidity cabinet	25 °C, 93 % R.H.	P
	Reassembly of those parts that may have been removed		P


**TEST REPORT N°: RIK-16DE0422HTSP**

IEC 60335-2-8			
Clause	Requirement - Test	Result - Remark	Verdict
	The appliance withstands the tests of clause 16		P
16	LEAKAGE CURRENT AND ELECTRIC STRENGTH		--
16.1	Leakage current not excessive and electric strength adequate		P
	Protective impedance disconnected from live parts before carrying out the tests		N/A
	Tests carried out at room temperature and not connected to the supply		P
16.2	Single-phase appliances: test voltage 1.06 times rated voltage (V) .....	1,06x240=254,4 V	P
	Three-phase appliances: test voltage 1.06 times rated voltage divided by $\sqrt{3}$ (V) .....		N/A
	Leakage current measurements .....	(see appended table)	P
	Limit values doubled if:		--
	- all controls have an off position in all poles, or		N/A
	- the appliance has no control other than a thermal cut-out, or		N/A
	- all thermostats, temperature limiters and energy regulators do not have an off position, or		N/A
	- the appliance has radio interference filters		N/A
	With the radio interference filters disconnected, the leakage current do not exceed limits specified .....	(see appended table)	N/A
16.3	Electric strength tests according to table 7.....	(see appended table)	P
	Test voltage applied between the supply cord and inlet bushing and cord guard and cord anchorage as specified .....	(see appended table)	P
	No breakdown during the tests		P
17	OVERLOAD PROTECTION OF TRANSFORMERS AND ASSOCIATED CIRCUITS		--
	No excessive temperatures in transformer or associated circuits in event of short-circuits likely to occur in normal use .....	(see appended table)	P
	Appliance supplied with 1.06 or 0.94 times rated voltage under the most unfavourable short-circuit or overload likely to occur in normal use (V) .....	254,4V	P
	Basic insulation is not short-circuited		N/A



**TEST REPORT N°: RIK-16DE0422HTSP**

IEC 60335-2-8			
Clause	Requirement - Test	Result - Remark	Verdict
	Temperature rise of insulation of the conductors of safety extra-low voltage circuits not exceeding the relevant value specified in table 3 by more than 15 K		N/A
	Temperature of the winding not exceeding the value specified in table 8		N/A
	However, limits do not apply to fail-safe transformers complying with sub-clause 15.5 of IEC 61558-1	Refer to the adaptor CB test report: 17048326 001	P
18	ENDURANCE		--
	Requirements and tests are specified in part 2 when necessary		N/A
19	ABNORMAL OPERATION		--
19.1	The risk of fire, mechanical damage or electric shock under abnormal or careless operation obviated		P
	Electronic circuits so designed and applied that a fault will not render the appliance unsafe .....	(see appended table)	P
	Appliances incorporating heating elements subjected to the tests of 19.2 and 19.3, and		N/A
	if the appliance also has a control that limit the temperature during clause 11 it is subjected to the test of 19.4, and		N/A
	if applicable, to the test of 19.5		N/A
	Appliances incorporating PTC heating elements are also subjected to the test of 19.6		N/A
	Appliances incorporating motors subjected to the tests of 19.7 to 19.10, as applicable	19.7	P
	Appliances incorporating electronic circuits subjected to the tests of 19.11 and 19.12, as applicable	19.11	P
	Appliances incorporating contactors or relays subjected to the test of 19.14, being carried out before the tests of 19.11		N/A
	Appliances incorporating voltage selector switches subjected to the test of 19.15		N/A
	Unless otherwise specified, the tests are continued until a non-self-resetting thermal cut-out operates, or		N/A
	until steady conditions are established		P



**TEST REPORT N°: RIK-16DE0422HTSP**

IEC 60335-2-8			
Clause	Requirement - Test	Result - Remark	Verdict
	If a heating element or intentionally weak part becomes open-circuited, the relevant test is repeated on a second sample		N/A
	Hand-held appliances are also subjected to the test of 19.101. (IEC 60335-2-8)		P
19.2	Test of appliances with heating elements with restricted heat dissipation; test voltage (V), power input of 0.85 times rated power input (W) .....		N/A
19.3	Test of 19.2 repeated; test voltage (V), power input of 1.24 times rated power input (W) .....		N/A
19.4	Test conditions as in clause 11, any control limiting the temperature during tests of clause 11 short-circuited		N/A
19.5	Test of 19.4 repeated on Class 0I and I appliances with tubular sheathed or embedded heating elements. No short-circuiting, but one end of the element connected to the sheath		N/A
	The test repeated with reversed polarity and the other end of the heating element connected to the sheath		N/A
	The test is not carried out on appliances intended to be permanently connected to fixed wiring and on appliances where an all-pole disconnection occurs during the test of 19.4		N/A
19.6	Appliances with PTC heating elements tested at rated voltage, establishing steady conditions		N/A
	The working voltage of the PTC heating element is increased by 5% and the appliance is operated until steady conditions are re-established. The voltage is then increased in similar steps until 1.5 times working voltage or until the PTC heating element ruptures (V) .....		N/A
19.7	Stalling test by locking the rotor if the locked rotor torque is smaller than the full load torque, or		N/A
	locking moving parts of other appliances		P
	Locked rotor, capacitors open-circuited one at a time		N/A
	Test repeated with capacitors short-circuited one at a time, unless		N/A
	capacitor is of class P2 of IEC 60252-1		N/A



**TEST REPORT N°: RIK-16DE0422HTSP**

IEC 60335-2-8			
Clause	Requirement - Test	Result - Remark	Verdict
	Appliances with timer or programmer supplied with rated voltage for each of the tests, for a period equal to the maximum period allowed .....		N/A
	Other appliances supplied with rated voltage for a period as specified .....	30s for hand-held appliance	P
	Winding temperatures not exceeding values specified in table 8.....	(see appended table)	P
	Appliances that are not hand-held or are not kept switched on by hand are tested for 5 min.(IEC 60335-2-8)		N/A
19.8	Multi-phase motors operated at rated voltage with one phase disconnected		N/A
19.9	Running overload test on appliances incorporating motors intended to be remotely or automatically controlled or liable to be operated continuously		N/A
	Motor-operated and combined appliances for which 30.2.3 is applicable and that use overload protective devices relying on electronic circuits to protect the motor windings, are also subjected to the test		N/A
	Winding temperatures not exceeding values as specified .....	(see appended table)	N/A
19.10	Series motor operated at 1.3 times rated voltage for 1 min (V) .....		N/A
	During the test, parts not being ejected from the appliance		N/A
19.11	Electronic circuits, compliance checked by evaluation of the fault conditions specified in 19.11.2 for all circuits or parts of circuits, unless		N/A
	they comply with the conditions specified in 19.11.1		P
	Appliances incorporating an electronic circuit that relies upon a programmable component to function correctly, subjected to the test of 19.11.4.8, unless		N/A
	restarting does not result in a hazard		N/A
	Appliances having a device with an off position obtained by electronic disconnection, or a device placing the appliance in a stand-by mode, subjected to the tests of 19.11.4		N/A
	If the safety of the appliance under any of the fault conditions depends on the operation of a miniature fuse-link complying with IEC 60127, the test of 19.12 is carried out		N/A


**TEST REPORT N°: RIK-16DE0422HTSP**

IEC 60335-2-8			
Clause	Requirement - Test	Result - Remark	Verdict
	During and after each test the following is checked:		--
	- the temperature of the windings do not exceed the values specified in table 8		P
	- the appliance complies with the conditions specified in 19.13		P
	- any current flowing through protective impedance not exceeding the limits specified in 8.1.4		P
	If a conductor of a printed board becomes open-circuited, the appliance is considered to have withstood the particular test, provided both of the following conditions are met:		--
	- the base material of the printed circuit board withstands the test of Annex E		N/A
	- any loosened conductor does not reduce clearance or creepage distances between live parts and accessible metal parts below the values specified in clause 29		N/A
19.11.1	Fault conditions a) to g) in 19.11.2 are not applied to circuits or parts of circuits meeting both of the following conditions:		--
	- the electronic circuit is a low-power circuit, that is, the maximum power at low-power points does not exceed 15 W according to the tests specified	Output from the adaptor less than 15 W	P
	- the protection against electric shock, fire hazard, mechanical hazard or dangerous malfunction of other parts of the appliance does not rely on the correct functioning of the electronic circuit		N/A
19.11.2	Fault conditions applied one at a time, the appliance operating under conditions specified in clause 11, but supplied at rated voltage, duration of the tests as specified:		--
	a) short circuit of functional insulation if clearances or creepage distances are less than the values specified in clause 29		N/A
	b) open circuit at the terminals of any component		N/A
	c) short circuit of capacitors, unless		N/A
	they comply with IEC 60384-14		N/A
	d) short circuit of any two terminals of an electronic component, other than integrated circuits		N/A
	This fault condition is not applied between the two circuits of an optocoupler		N/A
	e) failure of triacs in the diode mode		N/A


**TEST REPORT N°: RIK-16DE0422HTSP**

IEC 60335-2-8			
Clause	Requirement - Test	Result - Remark	Verdict
	f) failure of microprocessors and integrated circuits		N/A
	g) failure of an electronic power switching device		N/A
	Each low power circuit is short-circuited by connecting the low-power point to the pole of the supply source from which the measurements were made		N/A
19.11.3	If the appliance incorporates a protective electronic circuit which operates to ensure compliance with clause 19, the relevant test is repeated with a single fault simulated, as indicated in a) to g) of 19.11.2		N/A
19.11.4	Appliances having a device with an off position obtained by electronic disconnection, or		N/A
	a device that can be placed in the stand-by mode,		N/A
	subjected to the tests of 19.11.4.1 to 19.11.4.7, the device being set in the off position or in the stand-by mode		N/A
	Appliances incorporating a protective electronic circuit subjected to the tests of 19.11.4.1 to 19.11.4.7, the tests being carried out after the protective electronic circuit has operated, except that		N/A
	appliances operated for 30 s or 5 min during the test of 19.7 are not subjected to the tests for electromagnetic phenomena.		N/A
	Surge protective devices disconnected, unless		N/A
	They incorporate spark gaps		N/A
19.11.4.1	The appliance is subjected to electrostatic discharges in accordance with IEC 61000-4-2, test level 4		N/A
19.11.4.2	The appliance is subjected to radiated fields in accordance with IEC 61000-4-3, test level 3		N/A
19.11.4.3	The appliance is subjected to fast transient bursts in accordance with IEC 61000-4-4, test level 3 or 4 as specified		N/A
19.11.4.4	The power supply terminals of the appliance subjected to voltage surges in accordance with IEC 61000-4-5, test level 3 or 4 as specified		N/A
	Earthed heating elements in class I appliances disconnected		N/A
19.11.4.5	The appliance is subjected to injected currents in accordance with IEC 61000-4-6, test level 3		N/A



**TEST REPORT N°: RIK-16DE0422HTSP**

IEC 60335-2-8			
Clause	Requirement - Test	Result - Remark	Verdict
19.11.4.6	Appliances having a rated current not exceeding 16 A are subjected to the Class 3 voltage dips and interruptions in accordance with IEC 61000-4-11		N/A
	Appliances having a rated current exceeding 16 A are subjected to the Class 3 voltage dips and interruptions in accordance with IEC 61000-4-34		N/A
19.11.4.7	The appliance is subjected to mains signals in accordance with IEC 61000-4-13, test level class 2		N/A
19.11.4.8	The appliance is supplied at rated voltage and operated under normal operation. After 60s the power supply is reduced to a level such that the appliance ceases to respond or parts controlled by the programmable component cease to operate		N/A
	The appliance continues to operate normally, or		N/A
	requires a manual operation to restart		N/A
19.12	If the safety of the appliance for any of the fault conditions specified in 19.11.2 depends on the operation of a miniature fuse-link complying with IEC 60127, the test is repeated, measuring the current flowing through the fuse-link; measured current (A); rated current of the fuse-link (A).....:		N/A
19.13	During the tests the appliance does not emit flames, molten metal, poisonous or ignitable gas in hazardous amounts		P
	Temperature rises not exceeding the values shown in table 9 .....	(see appended table)	P
	Compliance with clause 8 not impaired		P
	If the appliance can still be operated it complies with 20.2		P
	Insulation, other than of class III appliances or class III constructions that do not contain live parts, withstands the electric strength test of 16.3, the test voltage as specified in table 4:		--
	- basic insulation (V) .....	1000V	P
	- supplementary insulation (V) .....	1750 V	P
	- reinforced insulation (V) .....	3000 V	P
	After operation or interruption of a control, clearances and creepage distances across the functional insulation withstand the electric strength test of 16.3, the test voltage being twice the working voltage		N/A


**TEST REPORT N°: RIK-16DE0422HTSP**

IEC 60335-2-8			
Clause	Requirement - Test	Result - Remark	Verdict
	The appliance does not undergo a dangerous malfunction, and		N/A
	no failure of protective electronic circuits, if the appliance is still operable		N/A
	Appliances tested with an electronic switch in the off position, or in the stand-by mode:		--
	- do not become operational, or		N/A
	- if they become operational, do not result in a dangerous malfunction during or after the tests of 19.11.4		N/A
	If the appliance contains lids or doors that are controlled by one or more interlocks, one of the interlocks may be released provided that:		--
	- the lid or door does not move automatically to an open position when the interlock is released, and		N/A
	- the appliance does not start after the cycle in which the interlock was released		N/A
19.14	Appliances operated under the conditions of clause 11, any contactor or relay contact operating under the conditions of clause 11 being short-circuited		N/A
	For a relay or contactor with more than one contact, all contacts are short-circuited at the same time		N/A
	A relay or contactor operating only to ensure the appliance is energized for normal use is not short-circuited		N/A
	If more than one relay or contactor operates in clause 11, they are short-circuited in turn		N/A
19.15	For appliances with a mains voltage selector switch, the switch is set to the lowest rated voltage position and the highest value of rated voltage is applied		N/A
19.101	Hand-held appliances are placed on a soft-wood board in the most unfavourable position. They are supplied at rated voltage and operated until steady conditions are established. (IEC 60335-2-8)		P
20	STABILITY AND MECHANICAL HAZARDS		--
20.1	Appliances having adequate stability	Hand-held	N/A
	Tilting test through an angle of 10°, appliance placed on an inclined plane/horizontal support, not connected to the supply mains; appliance does not overturn		N/A


**TEST REPORT N°: RIK-16DE0422HTSP**

IEC 60335-2-8			
Clause	Requirement - Test	Result - Remark	Verdict
	Tilting test repeated on appliances with heating elements, angle of inclination increased to 15°		N/A
	Possible heating test in overturned position; temperature rise does not exceed values shown in table 9		N/A
	Blows with an impact energy of 0,5 J are only applied to those parts that could hit the floor if the appliance is dropped. Three blows are applied to other parts with an impact energy of 0,35 J. (IEC 60335-2-8)		P
	Blows are not applied to cutting heads. (IEC 60335-2-8)		P
20.2	Moving parts adequately arranged or enclosed as to provide protection against personal injury		P
	Protective enclosures, guards and similar parts are non-detachable, and		P
	have adequate mechanical strength		P
	Enclosures that can be opened by overriding an interlock are considered to be detachable parts		N/A
	Self-resetting thermal cut-outs and overcurrent protective devices not causing a hazard by unexpected closure		N/A
	Not possible to touch dangerous moving parts with the test probe described		P
21	MECHANICAL STRENGTH		--
21.1	Appliance has adequate mechanical strength and is constructed as to withstand rough handling		P
	Checked by applying 3 blows to every point of the enclosure like to be weak, in accordance with test Ehb of IEC 60068-2-75, spring hammer test, with an impact energy of 0,5 J	(see appended table)	P
	The appliance shows no damage impairing compliance with this standard, and		P
	compliance with 8.1, 15.1 and clause 29 not impaired		P
	If doubt, supplementary or reinforced insulation subjected to the electric strength test of 16.3		N/A
	If necessary, repetition of groups of three blows on a new sample		N/A


**TEST REPORT N°: RIK-16DE0422HTSP**

IEC 60335-2-8			
Clause	Requirement - Test	Result - Remark	Verdict
21.2	Accessible parts of solid insulation having strength to prevent penetration by sharp implements		P
	Test not applicable if the thickness of supplementary insulation is at least 1 mm and reinforced insulation at least 2 mm	Approved adaptor	P
	The insulation is tested as specified, and does withstand the electric strength test of 16.3		N/A
22	CONSTRUCTION		--
22.1	Appliance marked with the first numeral of the IP system, relevant requirements of IEC 60529 are fulfilled		N/A
22.2	Stationary appliance: means to ensure all-pole disconnection from the supply being provided:		--
	- a supply cord fitted with a plug, or		N/A
	- a switch complying with 24.3, or		N/A
	- a statement in the instruction sheet that a disconnection incorporated in the fixed wiring is to be provided, or		N/A
	- an appliance inlet		N/A
	Single-pole switches and single-pole protective devices for the disconnection of heating elements in single-phase, permanently connected class 01 and class I appliances, connected to the phase conductor		N/A
22.3	Appliance provided with pins: no undue strain on socket-outlets	Approved adaptor certificate component	P
	Applied torque not exceeding 0.25 Nm		N/A
	Pull force of 50N to each pin after the appliance has being placed in the heating cabinet; when cooled to room temperature the pins are not displaced by more than 1mm		N/A
	Each pin subjected to a torque of 0.4Nm; the pins are not rotating, unless		N/A
	rotating does not impair compliance with this standard		N/A
22.4	Appliance for heating liquids and appliance causing undue vibration not provided with pins for insertion into socket-outlets		N/A



**TEST REPORT N°: RIK-16DE0422HTSP**

IEC 60335-2-8			
Clause	Requirement - Test	Result - Remark	Verdict
22.5	No risk of electric shock when touching the pins of the plug, for appliances having a capacitor with rated capacitance exceeding 0,1 $\mu$ F, the appliance being disconnected from the supply at the instant of voltage peak	No capacitor	P
	Voltage not exceeding 34 V (V) .....		N/A
22.6	Electrical insulation not affected by condensing water or leaking liquid		N/A
	Electrical insulation of Class II appliances not affected if a hose ruptures or seal leaks		N/A
	In case of doubt, test as described		N/A
22.7	Adequate safeguards against the risk of excessive pressure in appliances containing liquid or gases or having steam-producing devices		N/A
22.8	Electrical connections not subject to pulling during cleaning of compartments to which access can be gained without the aid of a tool, and that are likely to be cleaned in normal use		N/A
22.9	Insulation, internal wiring, windings, commutators and slip rings not exposed to oil, grease or similar substances, unless		P
	the substance has adequate insulating properties		N/A
22.10	Not possible to reset voltage-maintained non-self-resetting thermal cut-outs by the operation of an automatic switching device incorporated within the appliance, if:		N/A
	- a non-self-resetting thermal cut-out is required by the standard, and		N/A
	- a voltage maintained non-self-resetting thermal cut-out is used to meet it		N/A
	Non-self-resetting thermal motor protectors have a trip-free action, unless		N/A
	they are voltage maintained		N/A
	Reset buttons of non-self-resetting controls so located or protected that accidental resetting is unlikely		N/A
22.11	Reliable fixing of non-detachable parts that provide the necessary degree of protection against electric shock, moisture or contact with moving parts		P
	Obvious locked position of snap-in devices used for fixing such parts		P



# TEST REPORT N°: RIK-16DE0422HTSP

IEC 60335-2-8			
Clause	Requirement - Test	Result - Remark	Verdict
	No deterioration of the fixing properties of snap-in devices used in parts that are likely to be removed during installation or servicing		P
	Tests as described	Pull=30 N and push=50 N to switch button and Pull and push= 50 N to other parts	P
22.12	Handles, knobs etc. fixed in a reliable manner		P
	Fixing in wrong position of handles, knobs etc. indicating position of switches or similar components not possible		P
	Axial force 15 N applied to parts, the shape being so that an axial pull is unlikely to be applied		P
	Axial force 30 N applied to parts, the shape being so that an axial pull is likely to be applied		P
22.13	Unlikely that handles, when gripped as in normal use, make the operator's hand touch parts having a temperature rise exceeding the value specified for handles which are held for short periods only		P
22.14	No ragged or sharp edges creating a hazard for the user in normal use, or during user maintenance		P
	No exposed pointed ends of self-tapping screws or other fasteners, likely to be touched by the user in normal use or during user maintenance		P
22.15	Storage hooks and the like for flexible cords smooth and well rounded		N/A
22.16	Automatic cord reels cause no undue abrasion or damage to the sheath of the flexible cord, no breakage of conductors strands and no undue wear of contacts		N/A
	Cord reel tested with 6000 operations, as specified		N/A
	Electric strength test of 16.3, voltage of 1000 V applied		N/A
22.17	Spacers not removable from the outside by hand or by means of a screwdriver or a spanner		N/A
22.18	Current-carrying parts and other metal parts resistant to corrosion		P
22.19	Driving belts not relied upon to provide the required level of insulation, unless		P
	constructed to prevent inappropriate replacement		N/A


**TEST REPORT N°: RIK-16DE0422HTSP**

IEC 60335-2-8			
Clause	Requirement - Test	Result - Remark	Verdict
22.20	Direct contact between live parts and thermal insulation effectively prevented, unless		P
	material used is non-corrosive, non-hygroscopic and non-combustible		N/A
22.21	Wood, cotton, silk, ordinary paper and fibrous or hygroscopic material not used as insulation, unless		P
	impregnated		N/A
	This requirement does not apply to magnesium oxide and mineral ceramic fibres used for the electrical insulation of heating elements		N/A
22.22	Appliances not containing asbestos		P
22.23	Oils containing polychlorinated biphenyl (PCB) not used		P
22.24	Bare heating elements, except in class III appliances or class III constructions that do not contain live parts, adequately supported		N/A
	In case of rupture, the heating conductor is unlikely to come in contact with accessible metal parts		N/A
22.25	Sagging heating conductors, except in class III appliances or class III constructions that do not contain live parts, cannot come into contact with accessible metal parts		N/A
22.26	For class III constructions the insulation between parts operating at safety extra-low voltage and other live parts complies with the requirements for double or reinforced insulation	Approved adaptor	P
	Hand-held parts of washable shavers shall be class III construction having a working voltage not exceeding 24 V. (IEC 60335-2-8)		N/A
	Hand-held parts of wet shavers shall be class III construction having a working voltage not exceeding 12 V, except when they are being charged when the working voltage shall not exceed 24 V. (IEC 60335-2-8)		N/A
	Compliance is checked by inspection and by measurement. (IEC 60335-2-8)		N/A
22.27	Parts connected by protective impedance separated by double or reinforced insulation		N/A
22.28	Metal parts of Class II appliances conductively connected to gas pipes or in contact with water, separated from live parts by double or reinforced insulation		N/A



**TEST REPORT N°: RIK-16DE0422HTSP**

IEC 60335-2-8			
Clause	Requirement - Test	Result - Remark	Verdict
22.29	Class II appliances permanently connected to fixed wiring so constructed that the required degree of access to live parts is maintained after installation		N/A
22.30	Parts serving as supplementary or reinforced insulation fixed so that they cannot be removed without being seriously damaged, or	Approved adaptor	P
	so constructed that they cannot be replaced in an incorrect position, and so that if they are omitted, the appliance is rendered inoperable or manifestly incomplete		P
22.31	Neither clearances nor creepage distances over supplementary and reinforced insulation reduced below values specified in clause 29 as a result of wear		P
	Neither clearances nor creepage distances between live parts and accessible parts reduced below values for supplementary insulation if wires, screws etc. become loose		P
22.32	Supplementary and reinforced insulation constructed or protected against pollution so that clearances or creepage distances are not reduced below the values in clause 29		P
	Supplementary insulation of natural or synthetic rubber resistant to ageing, or arranged and dimensioned so that creepage distances are not reduced below values specified in 29.2		N/A
	Ceramic material not tightly sintered, similar materials or beads alone not used as supplementary or reinforced insulation		N/A
	Insulating material in which heating conductors are embedded is considered to be basic insulation, not reinforced insulation		N/A
	Oxygen bomb test at 70 °C for 96 h and 16 h at room temperature		N/A
22.33	Conductive liquids that are or may become accessible in normal use and conductive liquids that are in contact with unearthed accessible metal parts are not in direct contact with live parts		N/A
	Electrodes not used for heating liquids		N/A


**TEST REPORT N°: RIK-16DE0422HTSP**

IEC 60335-2-8			
Clause	Requirement - Test	Result - Remark	Verdict
	For class II constructions, conductive liquids that are or may become accessible in normal use and conductive liquids that are in contact with unearthed accessible metal parts, not in direct contact with basic or reinforced insulation, unless		N/A
	the reinforced insulation consists of at least 3 layers		N/A
	For class II constructions, conductive liquids which are in contact with live parts, not in direct contact with reinforced insulation, unless		N/A
	the reinforced insulation consists of at least 3 layers		N/A
	An air layer not used as basic or supplementary insulation in a double insulation system if likely to be bridged by leaking liquid		N/A
22.34	Shafts of operating knobs, handles, levers etc. not live, unless		P
	the shaft is not accessible when the part is removed		N/A
22.35	For other than class III constructions, handles, levers and knobs, held or actuated in normal use, not becoming live in the event of a failure of basic insulation		P
	Such parts being of metal, and their shafts or fixings are likely to become live in the event of a failure of basic insulation, are either adequately covered by insulation material or their accessible parts are separated from their shafts or fixings by supplementary insulation		N/A
	This requirement does not apply to handles, levers and knobs on stationary appliances, other than those of electrical components, provided they are reliably connected to an earthing terminal or earthing contact, or separated from live parts by earthed metal		N/A
	Insulating material covering metal handles, levers and knobs withstand the electric strength test of 16.3 for supplementary insulation		N/A
22.36	For appliances other than class III, handles continuously held in the hand in normal use so constructed that when gripped as in normal use, the operators hand is not likely to touch metal parts, unless		P
	they are separated from live parts by double or reinforced insulation		P



**TEST REPORT N°: RIK-16DE0422HTSP**

IEC 60335-2-8			
Clause	Requirement - Test	Result - Remark	Verdict
	Hand-held parts shall be class II construction or class III construction. (IEC 60335-2-8)	Class II construction	P
	For appliances having a rated voltage not exceeding 150 V, hand-held parts except those of washable shavers and wet shavers may be of class 0 constructions. (IEC 60335-2-8)		N/A
22.37	Capacitors in Class II appliances not connected to accessible metal parts and their casings, if of metal, separated from accessible metal parts by supplementary insulation, unless		N/A
	the capacitors comply with 22.42		N/A
22.38	Capacitors not connected between the contacts of a thermal cut-out		N/A
22.39	Lamp holders used only for the connection of lamps		N/A
22.40	Animal shearers and animal clippers shall be fitted with a switch to control the motor. (IEC 60335-2-8)		N/A
22.41	No components, other than lamps, containing mercury		P
22.42	Protective impedance consisting of at least two separate components		N/A
	Values specified in 8.1.4 not exceeded if any one of the components are short-circuited or open-circuited		N/A
	Resistors checked by the test of 14.1 a) in IEC 60065		N/A
	Capacitors checked by the tests for class Y capacitors in IEC 60384-14		N/A
22.43	Appliances adjustable for different voltages, accidental changing of the setting of the voltage unlikely to occur		N/A
22.44	Appliances not having an enclosure that is shaped or decorated like a toy		P
22.45	When air is used as reinforced insulation, clearances not reduced below the values specified in 29.1.3 due to deformation as a result of an external force applied to the enclosure		P
22.46	For programmable protective electronic circuits used to ensure compliance with the standard, the software contains measures to control the fault/error conditions in table R.1		N/A



**TEST REPORT N°: RIK-16DE0422HTSP**

IEC 60335-2-8			
Clause	Requirement - Test	Result - Remark	Verdict
	Software that contains measures to control the fault/error conditions specified in table R.2 is to be specified in parts 2 for particular constructions or to address specific hazards		N/A
	These requirements are not applicable to software used for functional purpose or compliance with clause 11		N/A
22.47	Appliances connected to the water mains withstand the water pressure expected in normal use		N/A
	No leakage from any part, including any inlet water hose		N/A
22.48	Appliances connected to the water mains constructed to prevent backsiphonage of non-potable water		N/A
22.49	For remote operation, the duration of operation is to be set before the appliance can be started, unless		N/A
	the appliance switches off automatically or can operate continuously without hazard		N/A
22.50	Controls incorporated in the appliance take priority over controls actuated by remote operation		N/A
22.51	There is a control on the appliance manually adjusted to the setting for remote operation before the appliance can be operated in this mode		N/A
	There is a visual indication showing that the appliance is adjusted for remote operation		N/A
	These requirements not necessary on appliances that can operate as follows, without giving rise to a hazard:		--
	- continuously, or		N/A
	- automatically, or		N/A
	- remotely		N/A
22.52	Socket-outlets on appliances accessible to the user in accordance with the socket-outlet system used in the country in which the appliance is sold		N/A
22.101	Appliances shall not have openings that would allow small items to penetrate and touch live parts. (IEC 60335-2-8)		P
	Compliance is checked by inspection and by measuring the distance.		P
	This distance shall be at least 6 mm;		P
	If the appliance is fitted with legs, this distance is increased to 10 mm;		N/A



**TEST REPORT N°: RIK-16DE0422HTSP**

IEC 60335-2-8			
Clause	Requirement - Test	Result - Remark	Verdict
	If the appliance is intended to stand on a table and to 20 mm if it is intended to stand on the floor.		N/A
22.102	Shavers and hair clippers shall be constructed so that the penetration of clippings cannot give rise to electrical or mechanical faults. (IEC 60335-2-8)	Shaver	P
22.103	Washable shavers and wet shavers, other than those classified IPX7, shall be constructed so that parts that are intended to be fixed can be fixed securely. (IEC 60335-2-8)		N/A
23	INTERNAL WIRING		--
23.1	Wireways smooth and free from sharp edges		P
	Wires protected against contact with burrs, cooling fins etc.		P
	Wire holes in metal well-rounded or provided with bushings		N/A
	Wiring effectively prevented from coming into contact with moving parts		P
23.2	Beads etc. on live wires cannot change their position, and are not resting on sharp edges		N/A
	Beads inside flexible metal conduits contained within an insulating sleeve		N/A
23.3	Electrical connections and internal conductors movable relatively to each other not exposed to undue stress		N/A
	Flexible metallic tubes not causing damage to insulation of conductors		N/A
	Open-coil springs not used		N/A
	Adequate insulating lining provided inside a coiled spring, the turns of which touch one another		N/A
	No damage after 10 000 flexings for conductors flexed during normal use, or		N/A
	100 flexings for conductors flexed during user maintenance		N/A
	Electric strength test of 16.3, 1000 V between live parts and accessible metal parts		N/A
	Not more than 10% of the strands of any conductor broken, and		N/A
	not more than 30% for wiring supplying circuits that consume no more than 15W		N/A
23.4	Bare internal wiring sufficiently rigid and fixed		N/A


**TEST REPORT N°: RIK-16DE0422HTSP**

IEC 60335-2-8			
Clause	Requirement - Test	Result - Remark	Verdict
23.5	The insulation of internal wiring subjected to the supply mains voltage withstanding the electrical stress likely to occur in normal use		P
	Basic insulation electrically equivalent to the basic insulation of cords complying with IEC 60227 or IEC 60245, or		N/A
	no breakdown when a voltage of 2000 V is applied for 15 min between the conductor and metal foil wrapped around the insulation		P
23.6	Sleeving used as supplementary insulation on internal wiring retained in position by clamping at both ends, or		N/A
	be such that it can only be removed by breaking or cutting		N/A
23.7	The colour combination green/yellow only used for earthing conductors		N/A
23.8	Aluminium wires not used for internal wiring		N/A
23.9	Stranded conductors not consolidated by soldering where they are subjected to contact pressure, unless		P
	the contact pressure is provided by spring terminals		N/A
23.10	The insulation and sheath of internal wiring, incorporated in external hoses for the connection of an appliance to the water mains, at least equivalent to that of light polyvinyl chloride sheathed flexible cord (60227 IEC 52)		N/A
24	COMPONENTS		--
24.1	Components comply with safety requirements in relevant IEC standards		P
	List of components .....	(see appended table)	P
	If components have not been tested and found to comply with relevant IEC standard for the number of cycles specified, they are tested in accordance with 24.1.1 to 24.1.9		P
	For components mentioned in 24.1.1 to 24.1.9 no additional tests specified in the relevant component standard are necessary other than those specified in 24.1.1 to 24.1.9		P


**TEST REPORT N°: RIK-16DE0422HTSP**

IEC 60335-2-8			
Clause	Requirement - Test	Result - Remark	Verdict
	Components not tested and found to comply with relevant IEC standard and components not marked or not used in accordance with its marking, tested under the conditions occurring in the appliance		P
	Lampholders and starterholders that have not being tested and found to comply with the relevant IEC standard, tested as a part of the appliance and additionally according to the gauging and interchangeability requirements of the relevant IEC standard		N/A
	No additional tests specified for nationally standardized plugs such as those detailed in IEC/TR 60083 or connectors complying with the standard sheets of IEC 60320-1 and IEC 60309		N/A
24.1.1	Capacitors likely to be permanently subjected to the supply voltage and used for radio interference suppression or for voltage dividing, complying with IEC 60384-14		N/A
	If the capacitors have to be tested, they are tested according to Annex F		N/A
24.1.2	Safety isolating transformers complying with IEC 61558-2-6	Approval adaptor	P
	If they have to be tested, they are tested according to Annex G		N/A
24.1.3	Switches complying with IEC 61058-1, the number of cycles of operation being at least 10 000		N/A
	If they have to be tested, they are tested according to Annex H		P
	If the switch operates a relay or contactor, the complete switching system is subjected to the test		N/A
	If the switch only operates a motor starting relay complying with IEC 60730-2-10 with the number of cycles of a least 10 000 as specified, the complete switching system need not be tested		N/A
	Switches incorporated in animal clippers and animal shearers, and hair clippers for hairdressers, shall be tested for 50 000 cycles of operation. (IEC 60335-2-8)		N/A
	For switches incorporated in hair clippers intended for household use only, the number of cycles of operation declared for subclause 7.1.4 of IEC 61058-1 shall be at least 3 000. (IEC 60335-2-8)		N/A



**TEST REPORT N°: RIK-16DE0422HTSP**

IEC 60335-2-8			
Clause	Requirement - Test	Result - Remark	Verdict
	For switches incorporated in shavers intended for household use only, the number of cycles of operation declared for subclause 7.1.4 of IEC 61058-1 shall be at least 6 000. (IEC 60335-2-8)		N/A
24.1.4	Automatic controls complying with IEC 60730-1 with the relevant part 2. The number of cycles of operation being at least:		--
	- thermostats: 10 000		N/A
	- temperature limiters: 1 000		N/A
	- self-resetting thermal cut-outs: 300		N/A
	- voltage maintained non-self-resetting thermal cut-outs: 1 000		N/A
	- other non-self-resetting thermal cut-outs: 30		N/A
	- timers: 3 000		N/A
	- energy regulators: 10 000		N/A
	The number of cycles for controls operating during clause 11 need not be declared, if the appliance meets the requirements of this standard when they are short-circuited		N/A
	Thermal motor protectors are tested in combination with their motor under the conditions specified in Annex D		N/A
	For water valves containing live parts and that are incorporated in external hoses for connection of an appliance to the water mains, the degree of protection declared for subclause 6.5.2 of IEC 60730-2-8 is IPX7		N/A
24.1.5	Appliance couplers complying with IEC 60320-1		N/A
	However, for appliances classified higher than IPX0, the appliance couplers complying with IEC 60320-2-3		N/A
	Interconnection couplers complying with IEC 60320-2-2		N/A
24.1.6	Small lamp holders similar to E10 lampholders complying with IEC 60238, the requirements for E10 lampholders being applicable		N/A
24.1.7	For remote operation of the appliance via a telecommunication network, the relevant standard for the telecommunication interface circuitry in the appliance is IEC 62151		N/A
24.1.8	The relevant standard for thermal links is IEC 60691		N/A



**TEST REPORT N°: RIK-16DE0422HTSP**

IEC 60335-2-8			
Clause	Requirement - Test	Result - Remark	Verdict
	Thermal links not complying with IEC 60691 are considered to be an intentionally weak part for the purposes of Clause 19		N/A
24.1.9	Contactors and relays, other than motor starting relays, tested as part of the appliance		N/A
	They are also tested in accordance with Clause 17 of IEC 60730-1, the number of cycles of operations in 24.1.4 selected according to the contactor or relay function in the appliance .....		N/A
24.2	Appliances not fitted with:		--
	- switches or automatic controls in flexible cords		P
	- devices causing the protective device in the fixed wiring to operate in the event of a fault in the appliance		P
	- thermal cut-outs that can be reset by soldering, unless		N/A
	the solder has a melting point of at least 230 °C		N/A
24.3	Switches intended for all-pole disconnection of stationary appliances are directly connected to the supply terminals and have a contact separation in all poles, providing full disconnection under overvoltage category III conditions		N/A
24.4	Plugs and socket-outlets for extra-low voltage circuits and heating elements, not interchangeable with plugs and socket-outlets listed in IEC/TR 60083 or IEC 60906-1 or with connectors and appliance inlets complying with the standard sheets of IEC 60320-1		P
24.5	Capacitors in auxiliary windings of motors marked with their rated voltage and capacitance, and used accordingly		N/A
	Voltage across capacitors in series with a motor winding does not exceed 1,1 times rated voltage, when the appliance is supplied at 1,1 times rated voltage under minimum load		N/A
24.6	Working voltage of motors connected to the supply mains and having basic insulation that is inadequate for the rated voltage of the appliance, not exceeding 42 V	Motor	N/A
	In addition, the motors comply with the requirements of Annex I		N/A


**TEST REPORT N°: RIK-16DE0422HTSP**

IEC 60335-2-8			
Clause	Requirement - Test	Result - Remark	Verdict
24.7	Detachable hose-sets for connection of appliances to the water mains comply with IEC 61770		N/A
	They are supplied with the appliance		N/A
	Appliances intended to be permanently connected to the water mains not connected by a detachable hose-set		N/A
24.8	Motor running capacitors in appliances for which 30.2.3 is applicable and that are permanently connected in series with a motor winding, not causing a hazard in event of a failure		N/A
	One or more of the following conditions are to be met:		--
	- the capacitors are of class P2 according to IEC 60252-1		N/A
	- the capacitors are housed within a metallic or ceramic enclosure		N/A
	- the distance of separation of the outer surface to adjacent non-metallic parts exceeds 50 mm		N/A
	- adjacent non-metallic parts within 50 mm withstand the needle-flame test of Annex E		N/A
	- adjacent non-metallic parts within 50 mm classified as at least V-1 according to IEC 60695-11-10		N/A
25	SUPPLY CONNECTION AND EXTERNAL FLEXIBLE CORDS		--
25.1	Appliance not intended for permanent connection to fixed wiring, means for connection to the supply:		--
	- supply cord fitted with a plug,		N/A
	- an appliance inlet having at least the same degree of protection against moisture as required for the appliance, or		N/A
	- pins for insertion into socket-outlets	Direct plug-in power adaptor	P
25.2	Appliance not provided with more than one means of connection to the supply mains		P
	Stationary appliance for multiple supply may be provided with more than one means of connection, provided electric strength test of 1250 V for 1 min between each means of connection causes no breakdown		N/A
25.3	Appliance intended to be permanently connected to fixed wiring provided with one of the following means for connection to the supply mains:		--



**TEST REPORT N°: RIK-16DE0422HTSP**

IEC 60335-2-8			
Clause	Requirement - Test	Result - Remark	Verdict
	- a set of terminals allowing the connection of a flexible cord		N/A
	- a fitted supply cord		N/A
	- a set of supply leads accommodated in a suitable compartment		N/A
	- a set of terminals for the connection of cables of fixed wiring, cross-sectional areas specified in 26.6, and the appliance allows the connection of the supply conductors after the appliance has been fixed to its support		N/A
	- a set of terminals and cable entries, conduit entries, knock-outs or glands, allowing connection of appropriate types of cable or conduit, and the appliance allows the connection of the supply conductors after the appliance has been fixed to its support		N/A
	For a fixed appliance constructed so that parts can be removed to facilitate easy installation, this requirement is met if it is possible to connect the fixed wiring without difficulty after a part of the appliance has been fixed to its support		N/A
25.4	Cable and conduit entries, rated current of appliance not exceeding 16 A, dimension according to table 10 (mm) .....		N/A
	Introduction of conduit or cable does not reduce clearances or creepage distances below values specified in clause 29		N/A
25.5	Method for assembling the supply cord to the appliance:		--
	- type X attachment		N/A
	- type Y attachment		N/A
	- Type Z attachment is allowed for appliances intended for household use only. (IEC 60335-2-8)		N/A
	Type X attachments are not allowed on appliances with an IP classification exceeding IPX4. (IEC 60335-2-8)		N/A
	For multi-phase appliances supplied with a supply cord and that are intended to be permanently connected to fixed wiring, the supply cord is assembled to the appliance by type Y attachment		N/A
25.6	Plugs fitted with only one flexible cord		N/A
25.7	Supply cords, other than for class III appliances, being one of the following types:		--


**TEST REPORT N°: RIK-16DE0422HTSP**

IEC 60335-2-8			
Clause	Requirement - Test	Result - Remark	Verdict
	- rubber sheathed (at least 60245 IEC 53)		N/A
	- polychloroprene sheathed (at least 60245 IEC 57)		N/A
	- cross-linked polyvinyl chloride sheathed (at least 60245 IEC 88)		N/A
	- polyvinyl chloride sheathed. Not used if they are likely to touch metal parts having a temperature rise exceeding 75 K during the test of clause 11		--
	<ul style="list-style-type: none"> <li>light polyvinyl chloride sheathed cord (60227 IEC 52), for appliances not exceeding 3 kg</li> </ul>		N/A
	<ul style="list-style-type: none"> <li>ordinary polyvinyl chloride sheathed cord (60227 IEC 53), for other appliances</li> </ul>		N/A
	- heat resistant polyvinyl chloride sheathed. Not used for type X attachment other than specially prepared cords		--
	<ul style="list-style-type: none"> <li>heat-resistant light polyvinyl chloride sheathed cord (60227 IEC 56), for appliances not exceeding 3 kg</li> </ul>		N/A
	<ul style="list-style-type: none"> <li>heat-resistant polyvinyl chloride sheathed cord (60227 IEC 57), for other appliances</li> </ul>		N/A
	Supply cords for class III appliances adequately insulated		N/A
	Test with 500 V for 2 min for supply cords of class III appliances that contain live parts		N/A
	Flat twin tinsel cord is allowed for appliances intended for household use only as long as they are fitted with a non-rewirable plug. (IEC 60335-2-8)		N/A
	Rubber insulated supply cords of animal shearers shall be polychloroprene sheathed and not be lighter than ordinary polychloroprene sheathed flexible cord (code designation 60245 IEC 57). (IEC 60335-2-8)		N/A
	This requirement is not applicable to the supply cord on the battery charging unit for shavers for household use only. (IEC 60335-2-8)		N/A
	Supply cords shall have a length of at least 1,7 m. (IEC 60335-2-8)		N/A
25.8	Nominal cross-sectional area of supply cords not less than table 11; rated current (A); cross-sectional area (mm²).....:		N/A
25.9	Supply cords not in contact with sharp points or edges		N/A
25.10	Supply cord of class I appliances have a green/yellow core for earthing		N/A



**TEST REPORT N°: RIK-16DE0422HTSP**

IEC 60335-2-8			
Clause	Requirement - Test	Result - Remark	Verdict
25.11	Conductors of supply cords not consolidated by soldering where they are subject to contact pressure, unless		N/A
	the contact pressure is provided by spring terminals		N/A
25.12	Insulation of the supply cord not damaged when moulding the cord to part of the enclosure		N/A
25.13	Inlet openings so constructed as to prevent damage to the supply cord		N/A
	If the enclosure at the inlet opening is not of insulating material, a non-detachable lining or bushing complying with 29.3 for supplementary insulation provided		N/A
	If unsheathed supply cord, a similar additional bushing or lining is required, unless the appliance is		N/A
	class 0, or		N/A
	a class III appliance not containing live parts		N/A
25.14	Supply cords moved while in operation adequately protected against excessive flexing		N/A
	Flexing test, as described:		--
	- applied force (N).....:		N/A
	- number of flexings.....:		N/A
	The test does not result in:		--
	- short-circuit between the conductors, such that the current exceeds a value of twice the rated current		N/A
	- breakage of more than 10% of the strands of any conductor		N/A
	- separation of the conductor from its terminal		N/A
	- loosening of any cord guard		N/A
	- damage to the cord or the cord guard		N/A
	- broken strands piercing the insulation and becoming accessible		N/A
	The number of flexings for type Z attachment is 100 000 and for other attachments 50 000. (IEC 60335-2-8)		N/A



**TEST REPORT N°: RIK-16DE0422HTSP**

IEC 60335-2-8			
Clause	Requirement - Test	Result - Remark	Verdict
25.15	For appliances with supply cord and appliances to be permanently connected to fixed wiring by a flexible cord, conductors of the supply cord relieved from strain, twisting and abrasion by use of cord anchorage		N/A
	The cord cannot be pushed into the appliance to such an extent that the cord or internal parts of the appliance can be damaged		N/A
	Pull and torque test of supply cord, values shown in table 12: mass (kg); pull (N); torque (not on automatic cord reel) (Nm) .....		N/A
	Cord not damaged and max. 2 mm displacement of the cord		N/A
25.16	Cord anchorages for type X attachments constructed and located so that:		--
	- replacement of the cord is easily possible		N/A
	- it is clear how the relief from strain and the prevention of twisting are obtained		N/A
	- they are suitable for different types of supply cord		N/A
	- cord cannot touch the clamping screws of cord anchorage if these screws are accessible, unless		N/A
	they are separated from accessible metal parts by supplementary insulation		N/A
	- the cord is not clamped by a metal screw which bears directly on the cord		N/A
	- at least one part of the cord anchorage securely fixed to the appliance, unless		N/A
	it is part of a specially prepared cord		N/A
	- screws which have to be operated when replacing the cord do not fix any other component, unless		N/A
	the appliance becomes inoperative or incomplete or the parts cannot be removed without a tool		N/A
	- if labyrinths can be bypassed the test of 25.15 is nevertheless withstood		N/A
	- for class 0, 0I and I appliances they are of insulating material or are provided with an insulating lining, unless		N/A
	failure of the insulation of the cord does not make accessible metal parts live		N/A


**TEST REPORT N°: RIK-16DE0422HTSP**

IEC 60335-2-8			
Clause	Requirement - Test	Result - Remark	Verdict
	- for class II appliances they are of insulating material, or		N/A
	if of metal, they are insulated from accessible metal parts by supplementary insulation		N/A
	After the test of 25.15, under the conditions specified, the conductors have not moved by more than 1 mm in the terminals		N/A
25.17	Adequate cord anchorages for type Y and Z attachment, test with the cord supplied with the appliance		N/A
25.18	Cord anchorages only accessible with the aid of a tool, or		N/A
	Constructed so that the cord can only be fitted with the aid of a tool		N/A
25.19	Type X attachment, glands not used as cord anchorage in portable appliances		N/A
	Tying the cord into a knot or tying the cord with string not used		N/A
25.20	The insulated conductors of the supply cord for type Y and Z attachment additionally insulated from accessible metal parts		N/A
25.21	Space for supply cord for type X attachment or for connection of fixed wiring constructed:		--
	- to permit checking of conductors with respect to correct positioning and connection before fitting any cover		N/A
	- so there is no risk of damage to the conductors or their insulation when fitting the cover		N/A
	- for portable appliances, so that the uninsulated end of a conductor, if it becomes free from the terminal, prevented from contact with accessible metal parts		N/A
	2 N test to the conductor for portable appliances; no contact with accessible metal parts		N/A
25.22	Appliance inlets:		--
	- live parts not accessible during insertion or removal		N/A
	Requirement not applicable to appliance inlets complying with IEC 60320-1		N/A
	- connector can be inserted without difficulty		N/A


**TEST REPORT N°: RIK-16DE0422HTSP**

IEC 60335-2-8			
Clause	Requirement - Test	Result - Remark	Verdict
	- the appliance is not supported by the connector		N/A
	- not for cold conditions if temp. rise of external metal parts exceeds 75 K during clause 11, unless		N/A
	the supply cord is unlikely to touch such metal parts		N/A
25.23	Interconnection cords comply with the requirements for the supply cord, except that:		P
	- the cross-sectional area of the conductors is determined on the basis of the maximum current during clause 11		N/A
	- the thickness of the insulation may be reduced		N/A
	If necessary, electric strength test of 16.3		P
25.24	Interconnection cords not detachable without the aid of a tool if compliance with this standard is impaired when they are disconnected		P
	Interconnection cords of washable shavers shall be detachable. (IEC 60335-2-8)		N/A
	Wet shavers shall not have an interconnection cord unless they cannot be operated when connected to the supply mains. (IEC 60335-2-8)		N/A
25.25	Dimensions of pins that are inserted into socket-outlets compatible with the dimensions of the relevant socket-outlet.	Approved adaptor	P
	Dimensions of pins and engagement face in accordance with the dimensions of the relevant plug in IEC/TR 60083		N/A
26	TERMINALS FOR EXTERNAL CONDUCTORS		--
26.1	Appliances provided with terminals or equally effective devices for connection of external conductors		N/A
	Terminals only accessible after removal of a non-detachable cover, except		N/A
	for class III appliances that do not contain live parts		N/A
	Earthing terminals may be accessible if a tool is required to make the connections and means are provided to clamp the wire independently from its connection		N/A
26.2	Appliances with type X attachment and appliances for the connection of cables to fixed wiring provided with terminals in which connections are made by means of screws, nuts or similar devices, unless		N/A



**TEST REPORT N°: RIK-16DE0422HTSP**

IEC 60335-2-8			
Clause	Requirement - Test	Result - Remark	Verdict
	the connections are soldered		N/A
	Screws and nuts not used to fix any other component, except		N/A
	internal conductors, if so arranged that they are unlikely to be displaced when fitting the supply conductors		N/A
	If soldered connections used, the conductor so positioned or fixed that reliance is not placed on soldering alone, unless		N/A
	barriers provided so that neither clearances nor creepage distances between live parts and other metal parts reduced below the values for supplementary insulation if the conductor becomes free at the soldered joint		N/A
26.3	Terminals for type X attachment and for connection of cables of fixed wiring so constructed that the conductor is clamped between metal surfaces with sufficient contact pressure but without damaging the conductor		N/A
	Terminals fixed so that when the clamping means is tightened or loosened:		--
	- the terminal does not become loose		N/A
	- internal wiring is not subjected to stress		N/A
	- neither clearances nor creepage distances are reduced below the values in clause 29		N/A
	Compliance checked by inspection and by the test of subclause 9.6 of IEC 60999-1, the torque applied being equal to two-thirds of the torque specified (Nm) .....		N/A
	No deep or sharp indentations of the conductors		N/A
26.4	Terminals for type X attachment, except those having a specially prepared cord and those for the connection of cables of fixed wiring, no special preparation of conductors such as by soldering, use of cable lugs, eyelets or similar, and		N/A
	so constructed or placed that conductors prevented from slipping out when clamping screws or nuts are tightened		N/A
26.5	Terminals for type X attachment so located or shielded that if a wire of a stranded conductor escapes, no risk of accidental connection to other parts that result in a hazard		N/A


**TEST REPORT N°: RIK-16DE0422HTSP**

IEC 60335-2-8			
Clause	Requirement - Test	Result - Remark	Verdict
	Stranded conductor test, 8 mm insulation removed		N/A
	No contact between live parts and accessible metal parts and,		N/A
	for class II constructions, between live parts and metal parts separated from accessible metal parts by supplementary insulation only		N/A
26.6	Terminals for type X attachment and for connection of cables of fixed wiring suitable for connection of conductors with cross-sectional area according to table 13; rated current (A); nominal cross-sectional area (mm <sup>2</sup> ).....:		N/A
	If a specially prepared cord is used, terminals need only be suitable for that cord		N/A
26.7	Terminals for type X attachment, except in class III appliances not containing live parts, accessible after removal of a cover or part of the enclosure		N/A
26.8	Terminals for the connection of fixed wiring, including the earthing terminal, located close to each other		N/A
26.9	Terminals of the pillar type constructed and located as specified		N/A
26.10	Terminals with screw clamping and screwless terminals not used for flat twin tinsel cords, unless		N/A
	conductors ends fitted with means suitable for screw terminals		N/A
	Pull test of 5 N to the connection		N/A
26.11	For type Y and Z attachment, soldered, welded, crimped or similar connections may be used		N/A
	For Class II appliances, the conductor so positioned or fixed that reliance is not placed on soldering, welding or crimping alone	Approved adaptor	P
	If soldering, welding or crimping alone used, barriers provided so that clearances and creepage distances between live parts and other metal parts are not reduced below the values for supplementary insulation if the conductor becomes free	Approved adaptor	P
27	PROVISION FOR EARTHING		--
27.1	Accessible metal parts of Class 0I and I appliances permanently and reliably connected to an earthing terminal or earthing contact of the appliance inlet		N/A


**TEST REPORT N°: RIK-16DE0422HTSP**

IEC 60335-2-8			
Clause	Requirement - Test	Result - Remark	Verdict
	Earthing terminals and earthing contacts not connected to the neutral terminal		N/A
	Class 0, II and III appliances have no provision for earthing	Class II	P
	Safety extra-low voltage circuits not earthed, unless		P
	protective extra-low voltage circuits		N/A
27.2	Clamping means of earthing terminals adequately secured against accidental loosening		N/A
	Terminals for the connection of external equipotential bonding conductors allow connection of conductors of 2.5 to 6 mm <sup>2</sup> , and		N/A
	do not provide earthing continuity between different parts of the appliance, and		N/A
	conductors cannot be loosened without the aid of a tool		N/A
27.3	For a detachable part having an earth connection and being plugged into another part of the appliance, the earth connection is made before and separated after current-carrying connections when removing the part		N/A
	For appliances with supply cords, current-carrying conductors become taut before earthing conductor, if the cord slips out of the cord anchorage		N/A
27.4	No risk of corrosion resulting from contact between parts of the earthing terminal and the copper of the earthing conductor or other metal		N/A
	Parts providing earthing continuity, other than parts of a metal frame or enclosure, have adequate resistance to corrosion		N/A
	If of steel, these parts provided with an electroplated coating with a thickness at least 5 $\mu$ m		N/A
	Adequate protection against rusting of parts of coated or uncoated steel, only intended to provide or transmit contact pressure		N/A
	In the body of the earthing terminal is a part of a frame or enclosure of aluminium or aluminium alloys, precautions taken to avoid risk of corrosion		N/A
27.5	Low resistance of connection between earthing terminal and earthed metal parts		N/A


**TEST REPORT N°: RIK-16DE0422HTSP**

IEC 60335-2-8			
Clause	Requirement - Test	Result - Remark	Verdict
	This requirement does not apply to connections providing earthing continuity in the protective extra-low voltage circuit, provided the clearances of basic insulation are based on the rated voltage of the appliance		N/A
	Resistance not exceeding 0,1 $\Omega$ at the specified low-resistance test ( $\Omega$ ).....:		N/A
27.6	The printed conductors of printed circuit boards not used to provide earthing continuity in hand-held appliances.		N/A
	They may be used to provide earthing continuity in other appliances if at least two tracks are used with independent soldering points and the appliance complies with 27.5 for each circuit		N/A
28	SCREWS AND CONNECTIONS		--
28.1	Fixings, electrical connections and connections providing earthing continuity withstand mechanical stresses		P
	Screws not of soft metal liable to creep, such as zinc or aluminium		P
	Diameter of screws of insulating material min. 3 mm		N/A
	Screws of insulating material not used for any electrical connections or connections providing earthing continuity		N/A
	Screws used for electrical connections or connections providing earthing continuity screwed into metal		N/A
	Screws not of insulating material if their replacement by a metal screw can impair supplementary or reinforced insulation		N/A
	For type X attachment, screws to be removed for replacement of supply cord or for user maintenance, not of insulating material if their replacement by a metal screw impairs basic insulation		N/A
	For screws and nuts; torque-test as specified in table 14.....:	(see appended table)	N/A
28.2	Electrical connections and connections providing earthing continuity constructed so that contact pressure is not transmitted through non-ceramic insulating material liable to shrink or distort, unless		P


**TEST REPORT N°: RIK-16DE0422HTSP**

IEC 60335-2-8			
Clause	Requirement - Test	Result - Remark	Verdict
	there is resiliency in the metallic parts to compensate for shrinkage or distortion of the insulating material		N/A
	This requirement does not apply to electrical connections in circuits of appliances for which:		--
	<ul style="list-style-type: none"> <li>30.2.2 is applicable and that carry a current not exceeding 0,5 A</li> </ul>		N/A
	<ul style="list-style-type: none"> <li>30.2.3 is applicable and that carry a current not exceeding 0,2 A</li> </ul>		N/A
28.3	Space-threaded (sheet metal) screws only used for electrical connections if they clamp the parts together		N/A
	Thread-cutting (self-tapping) screws and thread rolling screws only used for electrical connections if they generate a full form standard machine screw thread		N/A
	Thread-cutting (self-tapping) screws not used if they are likely to be operated by the user or installer		N/A
	Thread-cutting, thread rolling and space threaded screws may be used in connections providing earthing continuity provided it is not necessary to disturb the connection:		--
	- in normal use,		N/A
	- during user maintenance,		N/A
	- when replacing a supply cord having a type X attachment, or		N/A
	- during installation		N/A
	At least two screws being used for each connection providing earthing continuity, unless		N/A
	the screw forms a thread having a length of at least half the diameter of the screw		N/A
28.4	Screws and nuts that make mechanical connection secured against loosening if they also make electrical connections or connections providing earthing continuity		N/A
	This requirement does not apply to screws in the earthing circuit if at least two screws are used, or		N/A
	if an alternative earthing circuit is provided		N/A
	Rivets for electrical connections or connections providing earthing continuity secured against loosening if the connections are subjected to torsion		N/A


**TEST REPORT N°: RIK-16DE0422HTSP**

IEC 60335-2-8			
Clause	Requirement - Test	Result - Remark	Verdict
29	CLEARANCES, CREEPAGE DISTANCES AND SOLID INSULATION		--
	Clearances, creepage distances and solid insulation withstand electrical stress		P
	For coatings used on printed circuits boards to protect the microenvironment (Type 1) or to provide basic insulation (Type 2), Annex J applies .....		N/A
	The microenvironment is pollution degree 1 under type 1 protection		N/A
	For type 2 protection, the spacing between the conductors before the protection is applied is not less than the values specified in Table 1 of IEC 60664-3		N/A
	These values apply to functional, basic, supplementary and reinforced insulation.....		N/A
29.1	Clearances not less than the values specified in table 16, taking into account the rated impulse voltage for the overvoltage categories of table 15, unless .....	(see appended table)	P
	for basic insulation and functional insulation they comply with the impulse voltage test of clause 14		N/A
	However, if the distances are affected by wear, distortion, movement of the parts or during assembly, the clearances for rated impulse voltages of 1500V and above are increased by 0,5 mm and the impulse voltage test is not applicable		N/A
	Impulse voltage test is not applicable:		--
	- when the microenvironment is pollution degree 3, or		N/A
	- for basic insulation of class 0 and class 01 appliances		N/A
	Appliances are in overvoltage category II		P
	A force of 2 N is applied to bare conductors, other than heating elements		P
	A force of 30 N is applied to accessible surfaces		P
29.1.1	Clearances of basic insulation withstand the overvoltages, taking into account the rated impulse voltage		P
	The values of table 16 or the impulse voltage test of clause 14 are applicable.....	(see appended table)	P



**TEST REPORT N°: RIK-16DE0422HTSP**

IEC 60335-2-8			
Clause	Requirement - Test	Result - Remark	Verdict
	Clearance at the terminals of tubular sheathed heating elements may be reduced to 1,0 mm if the microenvironment is pollution degree 1		N/A
	Lacquered conductors of windings considered to be bare conductors		P
29.1.2	Clearances of supplementary insulation not less than those specified for basic insulation in table 16:	(see appended table)	P
29.1.3	Clearances of reinforced insulation not less than those specified for basic insulation in table 16, using the next higher step for rated impulse voltage .....	(see appended table)	P
	For double insulation, with no intermediate conductive part between basic and supplementary insulation, clearances are measured between live parts and the accessible surface, and the insulation system is treated as reinforced insulation		P
29.1.4	Clearances for functional insulation are the largest values determined from:		--
	- table 16 based on the rated impulse voltage .....	(see appended table)	P
	- table F.7a in IEC 60664-1, frequency not exceeding 30 kHz		N/A
	- clause 4 of IEC 60664-4, frequency exceeding 30 kHz		N/A
	If values of table 16 are largest, the impulse voltage test of clause 14 may be applied instead, unless		N/A
	the microenvironment is pollution degree 3, or		N/A
	the distances can be affected by wear, distortion, movement of the parts or during assembly		P
	However, clearances are not specified if the appliance complies with clause 19 with the functional insulation short-circuited		N/A
	Lacquered conductors of windings considered to be bare conductors		P
	However, clearances at crossover points are not measured		P
	Clearance between surfaces of PTC heating elements may be reduced to 1mm		N/A
29.1.5	Appliances having higher working voltages than rated voltage, clearances for basic insulation are the largest values determined from:		--
	- table 16 based on the rated impulse voltage .....		N/A



**TEST REPORT N°: RIK-16DE0422HTSP**

IEC 60335-2-8			
Clause	Requirement - Test	Result - Remark	Verdict
	- table F.7a in IEC 60664-1, frequency not exceeding 30 kHz		N/A
	- clause 4 of IEC 60664-4, frequency exceeding 30 kHz		N/A
	If clearances for basic insulation are selected from Table F.7a of IEC 60664-1 or Clause 4 of IEC 60664-4, the clearances of supplementary insulation are not less than those specified for basic insulation		N/A
	If clearances for basic insulation are selected from Table F.7a of IEC 60664-1, the clearances of reinforced insulation dimensioned as specified in Table F.7a are to withstand 160% of the withstand voltage required for basic insulation		N/A
	If clearances for basic insulation are selected from Clause 4 of IEC 60664-4, the clearances of reinforced insulation are twice the value required for basic insulation		N/A
	If the secondary winding of a step-down transformer is earthed, or if there is an earthed screen between the primary and secondary windings, clearances of basic insulation on the secondary side not less than those specified in table 16, but using the next lower step for rated impulse voltage		N/A
	Circuits supplied with a voltage lower than rated voltage, clearances of functional insulation are based on the working voltage used as the rated voltage in table 15		N/A
29.2	Creepage distances not less than those appropriate for the working voltage, taking into account the material group and the pollution degree .....	(see appended table)	P
	Pollution degree 2 applies, unless		P
	- precautions taken to protect the insulation; pollution degree 1		N/A
	- insulation subjected to conductive pollution; pollution degree 3		N/A
	A force of 2 N is applied to bare conductors, other than heating elements		P
	A force of 30 N is applied to accessible surfaces		P



**TEST REPORT N°: RIK-16DE0422HTSP**

IEC 60335-2-8			
Clause	Requirement - Test	Result - Remark	Verdict
	In a double insulation system, the working voltage for both the basic and supplementary insulation is taken as the working voltage across the complete double insulation system		P
29.2.1	Creepage distances of basic insulation not less than specified in table 17.....:	(see appended table)	P
	However, if the working voltage is periodic and has a frequency exceeding 30 kHz, the creepage distances are also determined from table 2 of IEC 60664-4, these values being used if exceeding the values in table 17.....:		N/A
	Except for pollution degree 1, corresponding creepage distance not less than the minimum specified for the clearance in table 16, if the clearance has been checked according to the test of clause 14.....:		N/A
29.2.2	Creepage distances of supplementary insulation at least those specified for basic insulation in table 17, or .....	(see appended table)	P
	Table 2 of IEC 60664-4, as applicable .....		N/A
29.2.3	Creepage distances of reinforced insulation at least double those specified for basic insulation in table 17, or .....	(see appended table)	P
	Table 2 of IEC 60664-4, as applicable .....		N/A
29.2.4	Creepage distances of functional insulation not less than specified in table 18.....:	(see appended table)	P
	However, if the working voltage is periodic and has a frequency exceeding 30 kHz, the creepage distances are also determined from table 2 of IEC 60664-4, these values being used if exceeding the values in table 18.....:		N/A
	Creepage distances may be reduced if the appliance complies with clause 19 with the functional insulation short-circuited		N/A
29.3	Supplementary and reinforced insulation have adequate thickness, or a sufficient number of layers, to withstand the electrical stresses		P
	Compliance checked:		--
	- by measurement, in accordance with 29.3.1, or		P
	- by an electric strength test in accordance with 29.3.2, or		N/A


**TEST REPORT N°: RIK-16DE0422HTSP**

IEC 60335-2-8			
Clause	Requirement - Test	Result - Remark	Verdict
	- by an assessment of the thermal quality of the material combined with an electric strength test, in accordance with 29.3.3, and		N/A
	for accessible parts of reinforced insulation consisting of a single layer, by measurement in accordance with 29.3.4, or		N/A
	- as specified in subclause 6.3 of IEC 60664-4 for insulation that is subjected to any periodic voltage having a frequency exceeding 30 kHz		N/A
29.3.1	Supplementary insulation have a thickness of at least 1 mm	Approved adaptor	P
	Reinforced insulation have a thickness of at least 2 mm	Approved adaptor	P
29.3.2	Each layer of material withstand the electric strength test of 16.3 for supplementary insulation		N/A
	Supplementary insulation consist of at least 2 layers		N/A
	Reinforced insulation consist of at least 3 layers		N/A
29.3.3	The insulation is subjected to the dry heat test Bb of IEC 60068-2-2, followed by		N/A
	the electric strength test of 16.3		N/A
	If the temperature rise during the tests of clause 19 does not exceed the value specified in table 3, the test of IEC 60068-2-2 is not carried out		N/A
29.3.4	Thickness of accessible parts of reinforced insulation consisting of a single layer not less than specified in table 19.....:		N/A
30	RESISTANCE TO HEAT AND FIRE		--
30.1	External parts of non-metallic material,		P
	parts supporting live parts, and	Approved adaptor	P
	parts of thermoplastic material providing supplementary or reinforced insulation	Approved adaptor	P
	sufficiently resistant to heat		P
	Ball-pressure test according to IEC 60695-10-2		P
	External parts tested at 40 °C plus the maximum temperature rise determined during the test of clause 11, or at 75 °C, whichever is the higher; temperature (°C).....:	(see appended table)	P



**TEST REPORT N°: RIK-16DE0422HTSP**

IEC 60335-2-8			
Clause	Requirement - Test	Result - Remark	Verdict
	Parts supporting live parts tested at 40°C plus the maximum temperature rise determined during the test of clause 11, or at 125 °C, whichever is the higher; temperature (°C).....:	(see appended table)	P
	Parts of thermoplastic material providing supplementary or reinforced insulation tested at 25 °C plus the maximum temperature rise determined during clause 19, if higher; temperature (°C) .....	Approved adaptor	P
30.2	Parts of non-metallic material resistant to ignition and spread of fire		P
	This requirement does not apply to:		--
	parts having a mass not exceeding 0,5 g, provided the cumulative effect is unlikely to propagate flames that originate inside the appliance by propagating flames from one part to another, or		P
	decorative trims, knobs and other parts unlikely to be ignited or to propagate flames that originate inside the appliance		P
	Compliance checked by the test of 30.2.1, and in addition:		P
	- for attended appliances, 30.2.2 applies	For the hand-held part	P
	- for unattended appliances, 30.2.3 applies	For the adaptor	P
	For appliances for remote operation, 30.2.3 applies		N/A
	For base material of printed circuit boards, 30.2.4 applies	For the adaptor PCB	P
30.2.1	Parts of non-metallic material subjected to the glow-wire test of IEC 60695-2-11 at 550 °C		P
	However, test not carried out if the material is classified as having a glow-wire flammability index according to IEC 60695-2-12 of at least 550 °C, or		N/A
	the material is classified at least HB40 according to IEC 60695-11-10		N/A
	Parts for which the glow-wire test cannot be carried out need to meet the requirements in ISO 9772 for material classified HBF		N/A
30.2.2	Appliances operated while attended, parts of non-metallic material supporting current-carrying connections, and		P
	parts of non-metallic material within a distance of 3mm of such connections,		P


**TEST REPORT N°: RIK-16DE0422HTSP**

IEC 60335-2-8			
Clause	Requirement - Test	Result - Remark	Verdict
	subjected to the glow-wire test of IEC 60695-2-11		N/A
	The test severity is:		--
	- 750 °C, for connections carrying a current exceeding 0,5 A during normal operation		N/A
	- 650 °C, for other connections		N/A
	Glow-wire applied to an interposed shielding material, if relevant		N/A
	The glow-wire test is not carried out on parts of material classified as having a glow-wire flammability index according to IEC 60695-2-12 of at least:		--
	- 750 °C, for connections carrying a current exceeding 0,5 A during normal operation		N/A
	- 650 °C, for other connections		N/A
	The glow-wire test is also not carried out on small parts. These parts are to:		--
	- comprise material having a glow-wire flammability index of at least 750 °C, or 650 °C as appropriate, or		N/A
	- comply with the needle-flame test of Annex E, or		N/A
	- comprise material classified as V-0 or V-1 according to IEC 60695-11-10 .....		N/A
	Glow-wire test not applicable to conditions as specified .....	For the hand-held part	P
30.2.3	Appliances operated while unattended, tested as specified in 30.2.3.1 and 30.2.3.2	For adaptor part	P
	The tests are not applicable to conditions as specified .....		N/A
	Not applicable. (IEC 60335-2-8)		N/A
30.2.3.1	Parts of non-metallic material supporting connections carrying a current exceeding 0,2 A during normal operation, and		P
	parts of non-metallic material, other than small parts, within a distance of 3 mm,		P
	subjected to the glow-wire test of IEC 60695-2-11 with a test severity of 850 °C		P
	Glow-wire applied to an interposed shielding material, if relevant		N/A



**TEST REPORT N°: RIK-16DE0422HTSP**

IEC 60335-2-8			
Clause	Requirement - Test	Result - Remark	Verdict
	The glow-wire test is not carried out on parts of material classified as having a glow-wire flammability index according to IEC 60695-2-12 of at least 850 °C		N/A
30.2.3.2	Parts of non-metallic material supporting connections, and		P
	parts of non-metallic material within a distance of 3mm,		P
	subjected to glow-wire test of IEC 60695-2-11		P
	The test severity is:		--
	- 750 °C, for connections carrying a current exceeding 0,2 A during normal operation		P
	- 650 °C, for other connections		N/A
	Glow-wire applied to an interposed shielding material, if relevant		N/A
	However, the glow-wire test of 750 °C or 650 °C as appropriate, is not carried out on parts of material fulfilling both or either of the following classifications:		--
	- a glow-wire ignition temperature according to IEC 60695-2-13 of at least:		N/A
	• 775 °C, for connections carrying a current exceeding 0,2 A during normal operation		N/A
	• 675 °C, for other connections		N/A
	- a glow-wire flammability index according to IEC 60695-2-12 of at least:		N/A
	- 750 °C, for connections carrying a current exceeding 0,2 A during normal operation		N/A
	- 650 °C, for other connections		N/A
	The glow-wire test is also not carried out on small parts. These parts are to:		--
	- comprise material having a glow-wire ignition temperature of at least 775 °C or 675 °C as appropriate, or		N/A
	- comprise material having a glow-wire flammability index of at least 750 °C or 650 °C as appropriate, or		N/A
	- comply with the needle-flame test of Annex E, or		N/A
	- comprise material classified as V-0 or V-1 according to IEC 60695-11-10		N/A



**TEST REPORT N°: RIK-16DE0422HTSP**

IEC 60335-2-8			
Clause	Requirement - Test	Result - Remark	Verdict
	The consequential needle-flame test of Annex E applied to non-metallic parts that encroach within the vertical cylinder placed above the centre of the connection zone and on top of the non-metallic parts supporting current-carrying connections, and parts of non-metallic material within a distance of 3 mm of such connections if these parts are those:		--
	- parts that withstood the glow-wire test of IEC 60695-2-11 of 750 °C or 650 °C as appropriate, but produce a flame that persist longer than 2 s, or		N/A
	- parts that comprised material having a glow-wire flammability index of at least 750 °C or 650 °C as appropriate, or		N/A
	- small parts, that comprised material having a glow-wire flammability index of at least 750 °C or 650 °C as appropriate, or		N/A
	- small parts for which the needle-flame test of Annex E was applied, or		N/A
	- small parts for which a material classification of V-0 or V-1 was applied		N/A
	However, the consequential needle-flame test is not carried out on non-metallic parts, including small parts, within the cylinder that are:		--
	- parts having a glow-wire ignition temperature of at least 775 °C or 675 °C as appropriate, or		N/A
	- parts comprising material classified as V-0 or V-1 according to IEC 60695-11-10, or		N/A
	- parts shielded by a flame barrier that meets the needle-flame test of Annex E or that comprises material classified as V-0 or V-1 according to IEC 60695-11-10		N/A
30.2.4	Base material of printed circuit boards subjected to the needle-flame test of Annex E	For adaptor PCB	P
	Test not applicable to conditions as specified .....	For hand-held part	P
31	RESISTANCE TO RUSTING		--
	Relevant ferrous parts adequately protected against rusting		P
	Tests specified in part 2 when necessary		N/A
32	RADIATION, TOXICITY AND SIMILAR HAZARDS		--
	Appliance does not emit harmful radiation or present a toxic or similar hazard due to their operation in normal use		N/A


**TEST REPORT N°: RIK-16DE0422HTSP**

IEC 60335-2-8			
Clause	Requirement - Test	Result - Remark	Verdict

	Compliance is checked by the limits or tests specified in part 2, if relevant		N/A
--	---	--	-----

A	ANNEX A (INFORMATIVE) ROUTINE TESTS		—
	Description of routine tests to be carried out by the manufacturer		N/A

B	ANNEX B (NORMATIVE) APPLIANCES POWERED BY RECHARGEABLE BATTERIES		—
	The following modifications to this standard are applicable for appliances powered by batteries that are recharged in the appliance		P
	This annex does not apply to battery chargers		N/A
3.1.9	Appliance operated under the following conditions:		—
	-the appliance, supplied by its fully charged battery, operated as specified in relevant part 2		P
	-the battery is charged, the battery being initially discharged to such an extent that the appliance cannot operate		P
	-if possible, the appliance is supplied from the supply mains through its battery charger, the battery being initially discharged to such an extent that the appliance cannot operate. The appliance is operated as specified in relevant part 2		P
	If the appliance incorporates inductive coupling between two parts that are detachable from each other, the appliance is supplied from the supply mains with the detachable part removed		N/A
3.6.2	Part to be removed in order to discard the battery is not considered to be detachable		P
5.B.101	Appliances supplied from the supply mains tested as specified for motor-operated appliances		P
7.1	Battery compartment for batteries intended to be replaced by the user, marked with battery voltage and polarity of the terminals	Not intended to be replaced by the user	N/A
	The positive terminal indicated by symbol IEC 60417-5005 and the negative terminal by symbol IEC 60417-5006		N/A


**TEST REPORT N°: RIK-16DE0422HTSP**

IEC 60335-2-8			
Clause	Requirement - Test	Result - Remark	Verdict
7.6	Symbols 60417-5005 and IEC 60417-5006		P
7.12	The instructions give information regarding charging		P
	The instructions for appliances incorporating batteries intended to be replaced by the user includes required information		N/A
	Details about how to remove batteries containing materials hazardous to the environment given		N/A
7.15	Markings placed on the part of the appliance connected to the supply mains		P
8.2	Appliances having batteries that according to the instruction may be replaced by the user need only have basic insulation between live parts and the inner surface of the battery compartment		P
	If the appliance can be operated without batteries, double or reinforced insulation required		N/A
11.7	The battery is charged for the period described		P
19.1	Appliances subjected to tests of 19.101, 19.102 and 19.103		P
19.B.101	Appliances supplied at rated voltage for 168 h, the battery being continually charged		P
19.B.102	Short-circuiting of the terminals of the battery, being fully charged, for appliances having batteries that can be removed without the aid of a tool		N/A
19.B.103	Appliances having batteries replaceable by the user supplied at rated voltage under normal operation with the battery removed or in any position allowed by the construction		N/A
21.B.101	Appliances having pins for insertion into socket-outlets have adequate mechanical strength, checked according to procedure 2 of IEC 68-2-32		N/A
	Part of the appliance incorporating the pins subjected to the free fall test, procedure 2, of IEC 60068-2-32, the number of falls being:		—
	- 100, the mass of part does not exceed 250 g		N/A
	- 50, the mass of part exceeds 250 g		N/A
	After the test, the requirements of 8.1, 15.1.1, 16.3 and clause 29 are met		N/A
22.3	Appliances having pins for insertion into socket-outlets tested as fully assembled as possible		N/A



**TEST REPORT N°: RIK-16DE0422HTSP**

IEC 60335-2-8			
Clause	Requirement - Test	Result - Remark	Verdict
25.13	An additional lining or bushing not required for interconnection cords operating at safety extra-low voltage		N/A
30.2	For parts of the appliance connected to the supply mains during the charging period, 30.2.3 applies	For the adaptor	P
	For other parts, 30.2.2 applies	For hand-held part	P
C	ANNEX C (NORMATIVE) AGEING TEST ON MOTORS		—
	Tests, as described, carried out when doubt with regard to the temperature classification of the insulation of a motor winding		N/A
	Test conditions as specified		N/A
D	ANNEX D (NORMATIVE) THERMAL MOTOR PROTECTORS		—
	Applicable to appliances having motors that incorporate thermal motor protectors		N/A
	Test conditions as specified		N/A
E	ANNEX E (NORMATIVE) NEEDLE-FLAME TEST		—
	Needle-flame test carried out in accordance with IEC 60695-11-5, with the following modifications:		P
7	Severities		—
	The duration of application of the test flame is 30 s ± 1 s		P
9	Test procedure		—



**TEST REPORT N°: RIK-16DE0422HTSP**

IEC 60335-2-8			
Clause	Requirement - Test	Result - Remark	Verdict

9.1	The specimen so arranged that the flame can be applied to a vertical or horizontal edge as shown in the examples of figure 1		P
9.2	The first paragraph does not apply		P
9.3	The test is carried out on one specimen		P
	If the specimen does not withstand the test, the test may be repeated on two additional specimens, both withstanding the test		N/A
11	Evaluation of test results		P
	The duration of burning not exceeding 30 s		N/A
	However, for printed circuit boards, the duration of burning not exceeding 15 s	PCB in adaptor	P

F	ANNEX F (NORMATIVE) CAPACITORS		—
	Capacitors likely to be permanently subjected to the supply voltage, and used for radio interference suppression or voltage dividing, comply with the following clauses of IEC 60384-14, with the following modifications:		—
1.5	Terminology		—
1.5.3	Class X capacitors tested according to subclass X2		N/A
1.5.4	This subclause is applicable		N/A
1.6	Marking		—
	Items a) and b) are applicable		N/A
3.4	Approval testing		—
3.4.3.2	Table II is applicable as described		N/A
4.1	Visual examination and check of dimensions		—
	This subclause is applicable		N/A
4.2	Electrical tests		—
4.2.1	This subclause is applicable		N/A
4.2.5	This subclause is applicable		N/A
4.2.5.2	Only table IX is applicable		N/A
	Values for test A apply		N/A
	However, for capacitors in heating appliances the values for test B or C apply		N/A



**TEST REPORT N°: RIK-16DE0422HTSP**

IEC 60335-2-8			
Clause	Requirement - Test	Result - Remark	Verdict

4.12	Damp heat, steady state		—
	This subclause is applicable		N/A
	Only insulation resistance and voltage proof are checked		N/A
4.13	Impulse voltage		—
	This subclause is applicable		N/A
4.14	Endurance		—
	Subclauses 4.14.1, 4.14.3, 4.14.4 and 4.14.7 applicable		N/A
4.14.7	Only insulation resistance and voltage proof are checked		N/A
	Visual examination, no visible damage		N/A
4.17	Passive flammability test		—
	This subclause is applicable		N/A
4.18	Active flammability test		—
	This subclause is applicable		N/A

G	ANNEX G (NORMATIVE) SAFETY ISOLATING TRANSFORMERS		—
	The following modifications to this standard are applicable for safety isolating transformers:		N/A
7	Marking and instructions		—
7.1	Transformers for specific use marked with:		—
	-name, trademark or identification mark of the manufacturer or responsible vendor		N/A
	-model or type reference		N/A
17	Overload protection of transformers and associated circuits		—
	Fail-safe transformers comply with subclause 15.5 of IEC 61558-1		N/A
22	Construction		N/A
	Subclauses 19.1 and 19.1.2 of IEC 61558-2-6 are applicable		N/A
29	Clearances, creepage distances and solid insulation		N/A


**TEST REPORT N°: RIK-16DE0422HTSP**

IEC 60335-2-8			
Clause	Requirement - Test	Result - Remark	Verdict

29.1, 29.2, 29.3	The distances specified in items 2a, 2c and 3 in table 13 of IEC 61558-1 apply		N/A
	For insulated winding wires complying with subclause 19.12.3 of IEC 61558-1 there are no requirements for clearances or creepage distances		N/A
	For windings providing reinforced insulation, the distance specified in item 2c of table 13 of IEC 61558-1 is not assessed		N/A
	For safety isolating transformers subjected to periodic voltages with a frequency exceeding 30 kHz, the clearances, creepage distances and solid insulation values specified in IEC 60664-4 are applicable, if greater than the values specified in items 2a, 2c and 3 in table 13 of IEC 61558-1		N/A

H	ANNEX H (NORMATIVE) SWITCHES		—
	Switches comply with the following clauses of IEC 61058-1, as modified:		—
	-The tests of IEC 61058-1 carried out under the conditions occurring in the appliance		P
	-Before being tested, switches are operated 20 times without load		P
8	Marking and documentation		—
	Switches are not required to be marked		P
	However, switches that can be tested separately from the appliance marked with the manufacturer's name or trade mark and the type reference		N/A
13	Mechanism		—
	The tests may be carried out on a separate sample		P
15	Insulation resistance and dielectric strength		—
15.1	Not applicable		N/A
15.2	Not applicable		N/A
15.3	Applicable for full disconnection and micro-disconnection		P
17	Endurance		—
	Compliance is checked on three separate appliances or switches		P


**TEST REPORT N°: RIK-16DE0422HTSP**

IEC 60335-2-8			
Clause	Requirement - Test	Result - Remark	Verdict

	For 17.2.4.4, the number of cycles is 10 000, unless otherwise specified in 24.1.3 of the relevant part 2 of IEC 60335	10000	P
	Switches for operation under no load and which can be operated only by a tool and switches operated by hand that are interlocked so that they cannot be operated under load, are not subjected to the tests		N/A
	However, switches without this interlock are subjected to the test of 17.2.4.4 for 100 cycles of operation		P
	Subclauses 17.2.2 and 17.2.5.2 not applicable		N/A
	The ambient temperature during the test is that occurring in the appliance during the test of Clause 11 in IEC 60335-1		P
	Temperature rise of the terminals not more than 30 K above the temperature rise measured in clause 11 of IEC 60335-1	2,4K<30+4,5=34,5K	P
20	Clearances, creepage distances, solid insulation and coatings of rigid printed board assemblies		—
	This clause is applicable to clearances and creepage distances for functional insulation, across full disconnection and micro-disconnection, as stated in table 24		N/A

I	ANNEX I (NORMATIVE) MOTORS HAVING BASIC INSULATION THAT IS INADEQUATE FOR THE RATED VOLTAGE OF THE APPLIANCE		—
	The following modifications to this standard are applicable for motors having basic insulation that is inadequate for the rated voltage of the appliance:		N/A
8	Protection against access to live parts		—
8.1	Metal parts of the motor are considered to be bare live parts		N/A
11	Heating		—
11.3	Temperature rise of the body of the motor is determined instead of the temperature rise of the windings		N/A
11.8	Temperature rise of the body of the motor, where in contact with insulating material, not exceeding values in table 3 for the relevant insulating material		N/A



**TEST REPORT N°: RIK-16DE0422HTSP**

IEC 60335-2-8			
Clause	Requirement - Test	Result - Remark	Verdict

16	Leakage current and electric strength		—
16.3	Insulation between live parts of the motor and its other metal parts not subjected to the test		N/A
19	Abnormal operation		—
19.1	The tests of 19.7 to 19.9 not carried out		N/A
19.101	Appliance operated at rated voltage with each of the following fault conditions:		—
	- short circuit of the terminals of the motor, including any capacitor incorporated in the motor circuit		N/A
	- short circuit of each diode of the rectifier		N/A
	- open circuit of the supply to the motor		N/A
	- open circuit of any parallel resistor, the motor being in operation		N/A
	Only one fault simulated at a time, the tests carried out consecutively		N/A
22	Construction		—
22.1.101	For class I appliances incorporating a motor supplied by a rectifier circuit, the d.c. circuit being insulated from accessible parts of the appliance by double or reinforced insulation		N/A
	Compliance checked by the tests specified for double and reinforced insulation		N/A

J	ANNEX J (NORMATIVE) COATED PRINTED CIRCUIT BOARDS		—
	Testing of protective coatings of printed circuit boards carried out in accordance with IEC 60664-3 with the following modifications:		N/A
5.7	Conditioning of the test specimens		—
	When production samples are used, three samples of the printed circuit board are tested		N/A
5.7.1	Cold		—
	The test is carried out at -25°C		N/A
5.7.3	Rapid change of temperature		—
	Severity 1 is specified		N/A
5.9	Additional tests		—
	This subclause is not applicable		N/A



**TEST REPORT N°: RIK-16DE0422HTSP**

IEC 60335-2-8			
Clause	Requirement - Test	Result - Remark	Verdict

K	ANNEX K (NORMATIVE) OVERVOLTAGE CATEGORIES		—
	The information on overvoltage categories is extracted from IEC 60664-1		P
	Overvoltage category is a numeral defining a transient overvoltage condition		P
	Equipment of overvoltage category IV is for use at the origin of the installation		N/A
	Equipment of overvoltage category III is equipment in fixed installations and for cases where the reliability and the availability of the equipment is subject to special requirements		N/A
	Equipment of overvoltage category II is energy consuming equipment to be supplied from the fixed installation		P
	If such equipment is subjected to special requirements with regard to reliability and availability, overvoltage category III applies		N/A
	Equipment of overvoltage category I is equipment for connection to circuits in which measures are taken to limit transient overvoltages to an appropriate low level		N/A

L	ANNEX L (INFORMATIVE) GUIDANCE FOR THE MEASUREMENT OF CLEARANCES AND CREEPAGE DISTANCES		—
	Sequences for the determination of clearances and creepage distances		P

M	ANNEX M (NORMATIVE) POLLUTION DEGREE		—
	The information on pollution degrees is extracted from IEC 60664-1		P
	Pollution		—
	The microenvironment determines the effect of pollution on the insulation, taking into account the microenvironment		P
	Means may be provided to reduce pollution at the insulation by effective enclosures or similar		P


**TEST REPORT N°: RIK-16DE0422HTSP**

IEC 60335-2-8			
Clause	Requirement - Test	Result - Remark	Verdict
	Minimum clearances specified where pollution may be present in the microenvironment		P
	Degrees of pollution in the microenvironment		—
	For evaluating creepage distances, the following degrees of pollution in the microenvironment are established:		—
	- pollution degree 1: no pollution or only dry, non-conductive pollution occurs. The pollution has no influence		N/A
	- pollution degree 2: only non-conductive pollution occurs, except that occasionally a temporary conductivity caused by condensation is to be expected	Approved adaptor	P
	- pollution degree 3: conductive pollution occurs or dry non-conductive pollution occurs that becomes conductive due to condensation that is to be expected	For shaver	P
	- pollution degree 4: the pollution generates persistent conductivity caused by conductive dust or by rain or snow		N/A
N	ANNEX N (NORMATIVE) PROOF TRACKING TEST		—
	The proof tracking test is carried out in accordance with IEC 60112 with the following modifications:		P
7	Test apparatus		—
7.3	Test solutions		—
	Test solution A is used		P
10	Determination of proof tracking index (PTI)		—
10.1	Procedure		
	The proof voltage is 100V, 175V, 400V or 600V :	175 V	P
	The last paragraph of Clause 3 applies		P
	The test is carried out on five specimens		P
	In case of doubt, additional test with proof voltage reduced by 25V, the number of drops increased to 100		N/A
10.2	Report		P
	The report stating if the PTI value was based on a test using 100 drops with a test voltage of (PTI-25) V		P


**TEST REPORT N°: RIK-16DE0422HTSP**

IEC 60335-2-8			
Clause	Requirement - Test	Result - Remark	Verdict

O	ANNEX O (INFORMATIVE) SELECTION AND SEQUENCE OF THE TESTS OF CLAUSE 30		—
	Description of tests for determination of resistance to heat and fire		P
P	ANNEX P (INFORMATIVE) GUIDANCE FOR THE APPLICATION OF THIS STANDARD TO APPLIANCES USED IN WARM DAMP EQUABLE CLIMATES (IEC 60335-1/A1 : 2004)		—
	Modifications applicable for class 0 and 01 appliances having a rated voltage exceeding 150V, intended to be used in countries having a warm damp equable climate and that are marked WdaE		—
	Modifications may also be applied to class 1 appliances having a rated voltage exceeding 150V, intended to be used in countries having a warm damp equable climate and that are marked WdaE, if liable to be connected to a supply mains that excludes the protective earthing conductor		—
5.7	The ambient temperature for the tests of Clauses 11 and 13 is 40 +30 °C.		N/A
7.1	The appliance marked with the letters WdaE		N/A
7.12	The instructions state that the appliance is to be supplied through a RCD having a rated residual operating current not exceeding 30 mA		N/A
	The instructions state that the appliance is considered to be suitable for use in countries having a warm damp equable climate, but may also be used in other countries		N/A
11	Heating		—
11.8	The values of Table 3 are reduced by 15 K		N/A
13.2	The leakage current for class I appliances not exceeding 0,5 mA		N/A
15.3	The value of t is 37 °C		N/A
16.2	The leakage current for class I appliances not exceeding 0,5 mA		N/A
19.13	The leakage current test of 16.2 is applied in addition to the electric strength test of 16.3		N/A
Q	ANNEX Q (INFORMATIVE) SEQUENCE OF TESTS FOR THE EVALUATION OF ELECTRONIC CIRCUITS		—



**TEST REPORT N°: RIK-16DE0422HTSP**

IEC 60335-2-8			
Clause	Requirement - Test	Result - Remark	Verdict
	Description of tests for appliances incorporating electronic circuits		P
R	ANNEX R (NORMATIVE) SOFTWARE EVALUATION		—
	Programmable electronic circuits requiring software incorporating measures to control the fault/error conditions specified in table R.1 or R.2 validated in accordance with the requirements of this annex		N/A
R.1	Programmable electronic circuits using software		—
	Programmable electronic circuits requiring software incorporating measures to control the fault/error conditions specified in table R.1 or R.2 constructed so that the software does not impair compliance with the requirements of this standard		N/A
R.2	Requirements for the architecture		—
	Programmable electronic circuits requiring software incorporating measures to control the fault/error conditions specified in table R.1 or R.2 use measures to control and avoid software-related faults/errors in safety-related data and safety-related segments of the software		N/A
R.2.1.1	Programmable electronic circuits requiring software incorporating measures to control the fault/error conditions specified in table R.2 have one of the following structures:		—
	- single channel with periodic self-test and monitoring		N/A
	- dual channel (homogenous) with comparison		N/A
	- dual channel (diverse) with comparison		N/A
	Programmable electronic circuits requiring software incorporating measures to control the fault/error conditions specified in table R.1 have one of the following structures:		—
	- single channel with functional test		N/A
	- single channel with periodic self-test		N/A
	- dual channel without comparison		N/A
R.2.2	Measures to control faults/errors		N/A
R.2.2.1	When redundant memory with comparison is provided on two areas of the same component, the data in one area is stored in a different format from that in the other area		N/A



**TEST REPORT N°: RIK-16DE0422HTSP**

IEC 60335-2-8			
Clause	Requirement - Test	Result - Remark	Verdict
R.2.2.2	Programmable electronic circuits with functions requiring software incorporating measures to control the fault/error conditions specified in table R.2 and that use dual channel structures with comparison, have additional fault/error detection means for any fault/errors not detected by the comparison		N/A
R.2.2.3	For programmable electronic circuits with functions requiring software incorporating measures to control the fault/error conditions specified in table R.1 or R.2, means are provided for the recognition and control of errors in transmissions to external safety-related data paths		N/A
R.2.2.4	For programmable electronic circuits with functions requiring software incorporating measures to control the fault/error conditions specified in table R.1 or R.2, the programmable electronic circuits incorporate measures to address the fault/errors in safety-related segments and data indicated in table R.1 and R.2 as appropriate		N/A
R.2.2.5	For programmable electronic circuits with functions requiring software incorporating measures to control the fault/error conditions specified in table R.1 or R.2, detection of a fault/error occur before compliance with clause 19 is impaired		N/A
R.2.2.6	The software is referenced to relevant parts of the operating sequence and the associated hardware functions		N/A
R.2.2.7	Labels used for memory locations are unique		N/A
R.2.2.8	The software is protected from user alteration of safety-related segments and data		N/A
R.2.2.9	Software and safety-related hardware under its control is initialized and terminates before compliance with clause 19 is impaired		N/A
R.3	Measures to avoid errors		—
R.3.1	General		—
	For programmable electronic circuits with functions requiring software incorporating measures to control the fault/error conditions specified in table R.1 or R.2, the following measures to avoid systematic fault in the software are applied		—
	Software that incorporates measures used to control the fault/error conditions specified in table R.2 is inherently acceptable for software required to control the fault/error conditions specified in table R.1		N/A
R.3.2	Specification		N/A



**TEST REPORT N°: RIK-16DE0422HTSP**

IEC 60335-2-8			
Clause	Requirement - Test	Result - Remark	Verdict
R.3.2.1	Software safety requirements:	Software Id:	N/A
	The specification of the software safety requirements includes the descriptions listed		N/A
R.3.2.2	Software architecture		N/A
R.3.2.2.1	<p>The specification of the software architecture includes the aspects listed</p> <ul style="list-style-type: none"> <li>- techniques and measures to control software faults/errors (refer to R.2.2);</li> <li>- interactions between hardware and software;</li> <li>- partitioning into modules and their allocation to the specified safety functions;</li> <li>- hierarchy and call structure of the modules (control flow);</li> <li>- interrupt handling;</li> <li>- data flow and restrictions on data access;</li> <li>- architecture and storage of data;</li> <li>- time-based dependencies of sequences and data</li> </ul>	Document ref. No:	N/A
R.3.2.2.2	The architecture specification is validated against the specification of the software safety requirements by static analysis		N/A
R.3.2.3	Module design and coding		N/A
R.3.2.3.1	Based on the architecture design, software is suitably refined into modules		N/A
	Software module design and coding is implemented in a way that is traceable to the software architecture and requirements		N/A
R.3.2.3.2	Software code is structured		N/A
R.3.2.3.3	Coded software is validated against the module specification by static analysis		N/A
	The module specification is validated against the architecture specification by static analysis		N/A
R.3.3.3	Software validation		—
	The software is validated with reference to the requirements of the software safety requirements specification		N/A
	Compliance is checked by simulation of:		—
	- input signals present during normal operation		N/A



**TEST REPORT N°: RIK-16DE0422HTSP**

IEC 60335-2-8			
Clause	Requirement - Test	Result - Remark	Verdict
	- anticipated occurrences		N/A
	- undesired conditions requiring system action		N/A



# TEST REPORT N°: RIK-16DE0422HTSP

10.1	TABLE: Power input deviation					N/A
Input deviation of/at:		P rated (W)	P measured (W)	dP	Required dP	Remark
--		--	--	--	--	--

10.2	TABLE: Current input deviation					P
Input deviation of/at:		I rated (A)	I measured (A)	dP	Required dP	Remark
Supply at 235V, 50Hz		0,3	0,02	-93,3%	+20 %	YD-398

11.8 (1)	TABLE: Heating test, thermocouples YD-398			P
	Test voltage (V):		1,06x240=254,4 V	—
	Ambient (°C):		18,2	—
Thermocouple locations		dT (K)	Max. dT (K)	
Internal wire		0,2	55(T80-25)	
Ambient of power switch		1,0	For annex H	
PCB in main part		0,5	120	
PCB in adaptor		14,5	120	
Transformer in adaptor		16,7	80 (Class 120)	
Enclosure (inside)		0,4	Clause 30.1	
Motor holder		3,8	Clause 30.1	
Motor case		0,5	80 (Class 120)	
Appliance inlet shroud		0,5	Clause 30.1	
Battery surface		0,3	20	
Handle surface/external enclosure (plastic)		0,5	50	
Function head		0,3	50	
Button of power switch		0,6	60	
Adaptor surface		19,8	60	
Test corner		0,5	65	
Remark: 1) Battery charged for 24 h, the battery was being initially discharged to such an extent that the appliance cannot operate. 2) Motor did not work.				

11.8 (2)	TABLE: Heating test, thermocouples YD-398					P
Test voltage (V):				--	—	



# TEST REPORT N°: RIK-16DE0422HTSP

	Ambient (°C):	18,1	—
Thermocouple locations	dT (K)	Max. dT (K)	
Internal wire	3,9	55(T80-25)	
Ambient of power switch	3,0	For Annex H	
PCB in main part	1,8	120	
Enclosure (inside)	2,5	Clause 30.1	
Appliance inlet shroud	0,6	Clause 30.1	
Motor holder	10,6	Clause 30.1	
Battery surface	0,6	20	
Motor case	9,0	80(Class 120)	
Handle surface/external enclosure (plastic)	4,8	50	
Function head	6,6	50	
Button of power switch	2,9	60	
Remark: 1) Supplied by its fully charged battery. 2) Operated for 10 min			

11.8 (3)	TABLE: Heating test, thermocouples YD-398		P
	Test voltage (V):	1,06x240=254,4 V	—
	Ambient (°C):	18,0	—
Thermocouple locations	dT (K)	Max. dT (K)	
Internal wire	6,4	55(T80-25)	
Ambient of power switch	4,5	For Annex H	
PCB in main part	3,7	120	
PCB in adaptor	18,0	120	
Transformer in adaptor	23,0	80 (Class 120)	
Enclosure (inside)	4,6	Clause 30.1	
Appliance inlet shroud	1,3	Clause 30.1	
Motor holder	12,4	Clause 30.1	
Battery surface	0,8	20	
Motor case	12,6	80(Class 120)	
Handle surface/external enclosure (plastic)	3,5	50	
Function head	7,2	50	
Button of power switch	1,8	60	

**TEST REPORT N°: RIK-16DE0422HTSP**

Adaptor surface	10,5	60
Remark: 1) Supplied from the supply mains through its battery charger, the battery being initially discharged to such an extent that the appliance cannot operate. 2) operated for 10 min		

13.2	TABLE: Leakage current YD-398		P
	Heating appliances: 1.15 x rated input:	--	—
	Motor-operated and combined appliances: 1.06 x rated voltage:	1,06x240=254,4 V	—
Leakage current between		I (mA)	Max. allowed I (mA)
Pins of adaptor and accessible parts		0,002	0,35 peak
Accessible main parts		0,003	0,7 peak

13.3	TABLE: Electric strength YD-398		P
Test voltage applied between:		Voltage (V)	Breakdown (Yes/No)
Accessible parts		3000	No

16.2	TABLE: Leakage current YD-398		P
	Single phase appliances: 1.06 x rated voltage:	1,06x240=254,4 V	—
	Three phase appliances 1.06 x rated voltage divided by $\sqrt{3}$ :	—	—
Leakage current between		I (mA)	Max. allowed I (mA)
Pins of adaptor and accessible parts		0,001	0,25
Accessible main parts		0,001	0,5

16.3	TABLE: Electric strength YD-398		P
Test voltage applied between:		Voltage (V)	Breakdown (Yes/No)
Pins of adaptor and accessible parts		3000	No



# TEST REPORT N°: RIK-16DE0422HTSP

17	TABLE: Overload protection, thermocouple measurements YD-398	P
Temperature rise of part/at:		ΔT (K)
		Max. ΔT (K)
The transformer in the adaptor is fail-safe transformer comply with sub clause 15.5 of IEC 61558-1. Please refer to the test report of the adaptor.		

19.13	TABLE: Abnormal operation, running overload YD-398	P
Parts measured	Limit temp. rise(K)	Measured temperature rise (K)
		19,7
		19,101
		19.B.101/Annex B
Enclosure(inside)	Cl. 30	3,4
		3,9
		4,3
Motor case	215 °C	23,5 °C
		--
		--
Test corner	150	--
		1,8
		4,3

24.1	TABLE: Components				P
Object / part No.	Manufacturer/ trademark	Type / model	Technical data	Standard	Mark(s) of conformity
Adapter	Ningbo KAM HOI Electronic Appliance Co.,Ltd	KHG030030D-2	Input:230-240V~, 50/Hz Output: 3V, 300mA	EN 61558-2-6 EN 61558-1	DE 2-018916 DE 2-018916-M1
Alternative with BS plug	Ningbo KAM HOI Electronic Appliance Co.,Ltd	KHB030030D-2	Input:230-240V~, 50/Hz Output: 3V, 300mA	EN 61558-2-6 EN 61558-1	DE 2-018916 DE 2-018916-M1
Motor	Yuyao City Leqi Micro Motor Factory	FF-170	DC2,4V, Class 120	EN 60335-2-8 EN 60335-1	Test with appliance
Battery	Jiangsu CEL battery Co., LTD	AA600mAh	Ni-MH, 1,2Vdc, 600mAh	IEC 62133	JPTUV-065741
Battery package	Jiangsu CEL battery Co., LTD	AA600mAh	(Ni-MH, 1,2Vdc, 600mAh)x2	IEC 62133	RIK-15OC1207YT SP
Internal wire	Zhongshan Dongfeng Zhoushishenlong ElectronicWire Co.,Ltd	2468	300V 26AWG T80	EN 60335-2-8 EN 60335-1	Test with appliance
Switch	Yuyao Ocean Lock Factory	--	1,2Vdc	EN 60335-2-8 EN 60335-1	Test with appliance NST/CBV1508 04
PCB	Yuyao Fujianjun Electric Co.,Ltd	GB12023	--	EN 60335-2-8 EN 60335-1	Test with appliance
1) An asterisk indicates a mark which assures the agreed level of surveillance					



# TEST REPORT N°: RIK-16DE0422HTSP

28.1	TABLE: Threaded part torque test				N/A
Threaded part identification		Diameter of thread (mm)	Column number (I, II, or III)	Applied torque (Nm)	
Supplementary information:					

29.1	TABLE: Clearances					P
	Overvoltage category... :					—
		Type of insulation:				
Rated impulse voltage (V):	Min. cl (mm)	Basic	Functional	Supplementary	Reinforced	Verdict / Remark
330	0,5					NA
500	0,5					NA
800	0,5					NA
1500	1,0					NA
2500	2,0	3,2	3,3	3,6		P
4000	3,5				4,2	P
6000	6,0					NA
8000	8,5					NA
10000	11,5					NA
supplementary information:						

29.2	TABLE: Creepage distances, basic, supplementary and reinforced insulation										P
Working voltage (V)		Creepage distance (mm) Pollution degree									
	1	2			3			Type of insulation			
		Material group			Material group						
		I	II	IIIa/IIIb	I	II	IIIa/IIIb	B*)	S*)	R*)	Verdict
≤50	0,2	0,6	0,9	1,2	1,5	1,7	1,9		—	—	NA
≤50	0,2	0,6	0,9	1,2	1,5	1,7	1,9	—		—	NA
≤50	0,4	1,2	1,8	2,4	3,0	3,4	3,8	—	—		NA
>50 and ≤125	0,3	0,8	1,1	1,5	1,9	2,1	2,4		—	—	NA
>50 and ≤125	0,3	0,8	1,1	1,5	1,9	2,1	2,4	—		—	NA
>50 and ≤125	0,6	1,6	2,2	3,0	3,8	4,2	4,8	—	—		NA



**TEST REPORT N°: RIK-16DE0422HTSP**

>125 and ≤250	0,6	1,3	1,8	2,5	3,2	3,6	4,0	3,5	—	—	P
>125 and ≤250	0,6	1,3	1,8	2,5	3,2	3,6	4,0	—	3,8	—	P
>125 and ≤250	1,2	2,6	3,6	5,0	6,4	7,2	8,0	—	—	7,0	P
>250 and ≤400	1,0	2,0	2,8	4,0	5,0	5,6	6,3		—	—	NA
>250 and ≤400	1,0	2,0	2,8	4,0	5,0	5,6	6,3	—		—	NA
>250 and ≤400	2,0	4,0	5,6	8,0	10,0	11,2	12,6	—	—		NA
>400 and ≤500	1,3	2,5	3,6	5,0	6,3	7,1	8,0		—	—	NA
>400 and ≤500	1,3	2,5	3,6	5,0	6,3	7,1	8,0	—		—	NA
>400 and ≤500	2,6	5,0	7,2	10,0	12,6	14,2	16,0	—	—		NA
>500 and ≤800	1,8	3,2	4,5	6,3	8,0	9,0	10,0		—	—	NA
>500 and ≤800	1,8	3,2	4,5	6,3	8,0	9,0	10,0	—		—	NA
>500 and ≤800	3,6	6,4	9,0	12,6	16,0	18,0	20,0	—	—		NA
>800 and ≤1000	2,4	4,0	5,6	8,0	10,0	11,0	12,5		—	—	NA
>800 and ≤1000	2,4	4,0	5,6	8,0	10,0	11,0	12,5	—		—	NA
>800 and ≤1000	4,8	8,0	11,2	16,0	20,0	22,0	25,0	—	—		NA
>1000 and ≤1250	3,2	5,0	7,1	10,0	12,5	14,0	16,0		—	—	NA
>1000 and ≤1250	3,2	5,0	7,1	10,0	12,5	14,0	16,0	—		—	NA
>1000 and ≤1250	6,4	10,0	14,2	20,0	25,0	28,0	32,0	—	—		NA
>1250 and ≤1600	4,2	6,3	9,0	12,5	16,0	18,0	20,0		—	—	NA
>1250 and ≤1600	4,2	6,3	9,0	12,5	16,0	18,0	20,0	—		—	NA
>1250 and ≤1600	8,4	12,6	18,0	25,0	32,0	36,0	40,0	—	—		NA
>1600 and ≤2000	5,6	8,0	11,0	16,0	20,0	22,0	25,0		—	—	NA
>1600 and ≤2000	5,6	8,0	11,0	16,0	20,0	22,0	25,0	—		—	NA
>1600 and ≤2000	11,2	16,0	22,0	32,0	40,0	44,0	50,0	—	—		NA
>2000 and ≤2500	7,5	10,0	14,0	20,0	25,0	28,0	32,0		—	—	NA
>2000 and ≤2500	7,5	10,0	14,0	20,0	25,0	28,0	32,0	—		—	NA
>2000 and ≤2500	15,0	20,0	28,0	40,0	50,0	56,0	64,0	—	—		NA
>2500 and ≤3200	10,0	12,5	18,0	25,0	32,0	36,0	40,0		—	—	NA
>2500 and ≤3200	10,0	12,5	18,0	25,0	32,0	36,0	40,0	—		—	NA
>2500 and ≤3200	20,0	25,0	36,0	50,0	64,0	72,0	80,0	—	—		NA
>3200 and ≤4000	12,5	16,0	22,0	32,0	40,0	45,0	50,0		—	—	NA
>3200 and ≤4000	12,5	16,0	22,0	32,0	40,0	45,0	50,0	—		—	NA



# TEST REPORT N°: RIK-16DE0422HTSP

>3200 and ≤4000	25,0	32,0	44,0	64,0	80,0	90,0	100,0	—	—		NA
>4000 and ≤5000	16,0	20,0	28,0	40,0	50,0	56,0	63,0		—	—	NA
>4000 and ≤5000	16,0	20,0	28,0	40,0	50,0	56,0	63,0	—		—	NA
>4000 and ≤5000	32,0	40,0	56,0	80,0	100,0	112,0	126,0	—	—		NA

\*), B=Basic, S=Supplementary and R=Reinforced

29.2	TABLE: Creepage distances, functional insulation								P
Working voltage (V)	Creepage distance (mm)								
	Pollution degree								
	1	2			3				
		Material group			Material group				
		I	II	IIIa/IIIb	I	II	IIIa/IIIb	Verdict / Remark	
≤50	0,2	0,6	0,8	1,1	1,4	1,6	1,8	NA	
>50 and ≤125	0,3	0,7	1,0	1,4	1,8	2,0	2,2	NA	
>125 and ≤250	0,4	1,0	1,4	<b>2,0</b>	2,5	2,8	3,2	P(2,5)	
>250 and ≤400	0,8	1,6	2,2	3,2	4,0	4,5	5,0	NA	
>400 and ≤500	1,0	2,0	2,8	4,0	5,0	5,6	6,3	NA	
>500 and ≤800	1,8	3,2	4,5	6,3	8,0	9,0	10,0	NA	
>800 and ≤1000	2,4	4,0	5,6	8,0	10,0	11,0	12,5	NA	
>1000 and ≤1250	3,2	5,0	7,1	10,0	12,5	14,0	16,0	NA	
>1250 and ≤1600	4,2	6,3	9,0	12,5	16,0	18,0	20,0	NA	
>1600 and ≤2000	5,6	8,0	11,0	16,0	20,0	22,0	25,0	NA	
>2000 and ≤2500	7,5	10,0	14,0	20,0	25,0	28,0	32,0	NA	
>2500 and ≤3200	10,0	12,5	18,0	25,0	32,0	36,0	40,0	NA	
>3200 and ≤4000	12,5	16,0	22,0	32,0	40,0	45,0	50,0	NA	
>4000 and ≤5000	16,0	20,0	28,0	40,0	50,0	56,0	63,0	NA	
>5000 and ≤6300	20,0	25,0	36,0	50,0	63,0	71,0	80,0	NA	
>6300 and ≤8000	25,0	32,0	45,0	63,0	80,0	90,0	100,0	NA	
>8000 and ≤10000	32,0	40,0	56,0	80,0	100,0	110,0	125,0	NA	
>10000 and ≤12500	40,0	50,0	71,0	100,0	125,0	140,0	160,0	NA	



TEST REPORT N°: RIK-16DE0422HTSP

TABLE: Resistance to heat and fire																				
30	Object/ part No.		Manufacturer/ trademark		Type/ model	Ball pressure test °C		Glow wire test (GWT) °C				Glow-wire flammability index (GWFI) °C				Glow- wire ignition temp. (GWIT) °C		Needle- flame test (NFT)	Verdict	
						75	125	cl. 11 +40	cl. 19 +25	550	650	750	850	550	650	750	850	675	775	
											te	ti	te	ti						

LCIE CHINA  
欧亚电气技术服务(上海)有限公司

Building 4, No. 518, Xin Zhuan Road,  
CaoHejing Songjiang High-Tech Park,  
Shanghai P.R.C (201612)

Tel: +86 21 6195 7000  
Fax: +86 21 6195 7001  
Email: contact@cn.bureauveritas.com



**TEST REPORT N°: RIK-16DE0422HTSP**

Enclosure			0,8 mm								X								P
Appliance inlet shroud			0,5 mm								X								P
Adaptor enclosure									0	0	X								P
PCB in adaptor																		X	P
Motor holder			0,5 mm								X								P

LCIE TEST REPORT IECEN 60335-2-8.v.2.0



# TEST REPORT N°: RIK-16DE0422HTSP

Appendix 1: EU Group differences and EN 60335-2-8:2003+A1:2005+A2:2008  
used in conjunction with EN 60335-1:2012 and EN 62233 :2008

	CENELEC COMMON MODIFICATIONS		
6.1	Delete “class 0” and “class 01”		N/A
7.1	Single-phase appliances to be connected to the supply mains: 230 V covered	230-240	P
	Multi-phase appliances to be connected to the supply mains: 400 V covered		N/A
7.10	Devices used to start/stop operational functions of the appliance distinguished from other manual devices by means of shape, size, surface texture, position, etc.		P
	An indication that the device has been operated is given by:		—
	• a tactile feedback, or		P
	• an audible and visual feedback		N/A
7.12	The instructions include the substance of the following:		—
	- this appliance can be used by children aged from 8 years and above and persons with reduced physical, sensory or mental capabilities or lack of experience and knowledge if they have been given supervision or instruction concerning use of the appliance in a safe way and understand the hazards involved		P
	- children shall not play with the appliance		P
	- cleaning and user maintenance shall not be made by children without supervision		P
7.12.Z1	The specific instructions related to the safe operation of this appliance is collated together in the front section of the user instructions		P
	The height of the characters, measured on the capital letters, is at least 3 mm		P
	These instructions are also available in an alternative format, e.g. on a website		P
8.1.1	Also test probe 18 of EN 61032 is applied		P
	The appliance being in every possible position during the test		P



**TEST REPORT N°: RIK-16DE0422HTSP**

	The force on the probe in the straight position is increased to 10 N when probe 18 is used		P
	When using test probe 18 the appliance is fully assembled as in normal use without any parts removed, and		P
	parts intended to be removed for user maintenance are also not removed		P
8.2	Compliance is checked by applying the test probes of EN 61032		P
	For built-in appliances and fixed appliances, the test probe B and probe 18 of EN 61032 are applied only after installation		N/A
11.8	Footnotes to "External enclosure of motor-operated appliances" to be taken into account		P
15.1.2	Appliances with an automatic cord reel tested with the cord in the most unfavourable position so that the reeling of the wet cord may affect electrical insulation during operation, the cord not being dried before reeling		N/A
20.2	When using the test probe similar to test probe B with a circular stop face, the accessories and detachable covers are removed		P
	Test probe 18 applied with a force of 2,5N on the appliance fully assembled		P
24.1	Components comply with the safety requirements specified in the relevant standards as far as they reasonably apply		P
	The requirements of Clause 29 of this standard apply between live parts of components and accessible parts of the appliance.		P
	The requirements of 30.2 of this standard apply to parts of non-metallic material in components including parts of non-metallic material supporting current-carrying connections inside components		P
	Components that have not been previously tested or do not comply with the standard for the relevant component are tested according to the requirements of 30.2		P



# TEST REPORT N°: RIK-16DE0422HTSP

	Components that have been previously tested and shown to comply with the resistance to fire requirements in the standard for the relevant component need not be retested provided that:	—
	- the severity specified in the component standard is not less than the severity specified in 30.2, and	P
	- the test report for the component states whether it complied with the standard for the relevant component with or without flame, flames not exceeding 2 s during the test are ignored	P
	Unless components have been previously tested and found to comply with the relevant standard for the number of cycles specified, they are tested in accordance with 24.1.1 to 24.1.9	P
	For components mentioned in 24.1.1 to 24.1.9, no additional tests specified in the relevant standard for the component are necessary other than those specified in 24.1.1 to 24.1.9	P
	Components that have not been separately tested and found to comply with the relevant standard, and	P
	components that are not marked or not used in accordance with their marking,	P
	are tested in accordance with the conditions occurring in the appliance, the number of samples being that required by the relevant standard	P
	Lamp holders and starter holders that have not been previously tested and found to comply with the relevant standard are tested as a part of the appliance and additionally comply with the gauging and interchangeability requirements of the relevant standard under the conditions occurring in the appliance	N/A
	Where the relevant standard specifies these gauging and interchangeability requirements at elevated temperatures, the temperatures measured during the tests of Clause 11 are used	N/A
	Plugs and socket-outlets and other connecting devices of interconnection cords are not interchangeable with plugs and socket-outlets listed in IEC/TR 60083 or IEC 60906-1, or	N/A
	with connectors and appliance inlets complying with the standard sheets of IEC 60320-1,	N/A



**TEST REPORT N°: RIK-16DE0422HTSP**

	if direct supply to these parts from the supply mains gives rise to a hazard		N/A
24.1.3	Switches incorporated in shavers and hair clippers intended for household use only, are tested for 3 000 cycles of operation. (EN 60335-2-8)		P
24.1.7	If the remote operation of the appliance is via a telecommunication network, the relevant standard for the telecommunication interface circuitry in the appliance is EN 41003		N/A
	Compliance with Clause 8 of this standard is not impaired by connecting the appliance to a device covered by EN 41003		N/A
24.Z1	For motor running capacitors (IEC 60252-1 type P2) with a metallic enclosure having an overpressure fuse the flame testing of internal plastic parts supporting current carrying connections as required in 30.2.2 and 30.2.3.1 is not necessary		N/A
25.6	Supply cords of single-phase portable appliances having a rated current not exceeding 16 A, fitted with a plug complying with the following standard sheets of IEC/TR 60083:		—
	- for Class I appliances: standard sheet C2b, C3b or C4.....:		N/A
	- for Class II appliances: standard sheet C5 or C6 .....		N/A
25.7	Rubber sheathed cords (60245 IEC 53) are not suitable for appliances intended to be used outdoors or when they are liable to be exposed to significant amount of ultraviolet radiation		N/A
	Halogen-free thermoplastic compound sheathed supply cords have properties at least those of:		—
	<ul style="list-style-type: none"> <li>halogen-free thermoplastic compound sheathed cords (H03Z1Z1H2-F or H03Z1Z1-F), for appliances having a mass not exceeding 3 kg</li> </ul>		N/A
	<ul style="list-style-type: none"> <li>halogen-free thermoplastic compound sheathed cords (H05Z1Z1H2-F or H05Z1Z1-F), for other appliances</li> </ul>		N/A



# TEST REPORT N°: RIK-16DE0422HTSP

	Cross-linked halogen-free compound sheathed supply cords have properties at least those of cross-linked halogen-free compound sheathed cords (H07ZZ-F)		N/A
26.11	Conductors connected by soldering are not considered to be positioned or fixed so that reliance is not placed upon the soldering alone to maintain them in position unless they are held in place near the terminals independently of the solder		N/A
29.3.Z1	Appliance constructed so that if there is a possibility of damaging the insulation during installation, the insulation withstands the scratch and penetration test of 21.2		N/A
32	Compliance regarding electromagnetic fields is checked according to EN 50366 or EN 62233	EN 62233	P
Annex I, 19.1.101	The appliance is supplied at rated voltage and operated under normal operation with each of the fault conditions specified		N/A
	The duration of the test is as specified in 19.7		N/A
<b>ZA</b>	<b>ANNEX ZA (NORMATIVE) SPECIAL NATIONAL CONDITIONS</b>		—
	<b>Norway</b>		—
19.5	The test is also applicable to appliances intended to be permanently connected to fixed wiring		N/A
22.2	The second paragraph of this subclause, dealing with single-phase, permanently connected class I appliances having heating elements, is not applicable due to the supply system		N/A
	<b>All CENELEC countries</b>		—
25.6 and 25.25	Information concerning National plug and socket-outlets is available from the CENELEC website. Normative national requirements concerning plug and socket-outlets are shown in the relevant National standard		P
	<b>Ireland and United Kingdom</b>		—
25.8	In the table, the lines for 10 A and 16 A are replaced by:		—
	> 10 and ≤ 13 1,25		N/A
	> 13 and ≤ 16 1,5		N/A



**TEST REPORT N°: RIK-16DE0422HTSP**

<b>ZB</b>	<b>ANNEX ZB (INFORMATIVE) A-DEVIATIONS</b>		—
	<b>Ireland</b>		—
25.6	These regulations apply to all plugs for domestic use at a voltage of not less than 200 V and in general allow only plugs complying with I.S. 401:1997, or equivalent, to be fitted to domestic appliances		N/A
	<b>United Kingdom</b>		—
25.6	These regulations apply to all plugs for domestic use at a voltage of not less than 200 V and in general allow only plugs to BS 1363 to be fitted to domestic appliances. It also allows plugs to BS 4573 and EN 50075 to be fitted to shavers and toothbrushes		P
<b>ZC</b>	<b>ANNEX ZC (NORMATIVE) NORMATIVE REFERENCES TO INTERNATIONAL PUBLICATIONS WITH THEIR CORRESPONDING EUROPEAN PUBLICATIONS</b>		—
	A list of referenced documents in this standard		P
<b>ZD</b>	<b>ANNEX ZD (INFORMATIVE) IEC and CENELEC CODE DESIGNATIONS FOR FLEXIBLE CORDS</b>		—
	A table with IEC and CENELEC code designations for flexible cords		P
<b>ZE</b>	<b>ANNEX ZE (INFORMATIVE) SPECIFIC ADDITIONAL REQUIREMENTS FOR APPLIANCES AND MACHINES INTENDED FOR COMMERCIAL USE</b>		—
7.1	Business name and full address of the manufacturer and, where applicable, his authorized representative.....:		N/A
	Model or type reference.....:		N/A
	Serial number, if any.....:		N/A
	Production year		N/A
	Designation of the appliance .....		N/A
7.12	Instructions provided with the appliance so that the appliance can be used safely		N/A
	The instructions contain at least the following information:		—



**TEST REPORT N°: RIK-16DE0422HTSP**

	- the business name and full address of the manufacturer and, where applicable, his authorized representative		N/A
	- model or type reference of the appliance as marked on the appliance itself, except for the serial number		N/A
	- the designation of the appliance together with its explanation in case it is given by a combination of letters and/or numbers		N/A
	- the general description of the appliance, when needed due to the complexity of the appliance		N/A
	- specific precautions if required during installation, operation, adjusting, user maintenance, cleaning, repairing or moving		N/A
	- when needed drawings, diagrams, descriptions and explanations necessary for the safe use and user maintenance of the appliance		N/A
	- the possible reasonably foreseeable misuse and, whenever relevant, a warning against the effects it may have on the safe use of the appliance		N/A
	The words "Original instructions" appear on the language version(s) verified by the manufacturer or by the authorized representative		N/A
	When a translation of the original instructions has been provided by a person introducing the appliance on the market; the meaning of the sentence "Translation of the original instructions" appear in the relevant instructions delivered with the appliance		N/A
	The instructions for maintenance/service to be done by specialized personnel, mandated by the manufacturer or the authorized representative may be supplied in only one Community language which the specialized personnel understand		N/A
	The instructions indicate the type and frequency of inspections and maintenance required for safe operation including the preventive maintenance measures		N/A
7.12.ZE1	If needed for specific appliances, the following information to be given:		—



# TEST REPORT N°: RIK-16DE0422HTSP

	<ul style="list-style-type: none"> <li>on use, transportation, assembly, dismantling when out of service, testing or foreseeable breakdowns, if these operations have consequences on stability of the appliance in order to avoid overturning, falling or uncontrolled movements of the appliance or of its component parts</li> </ul>		N/A
	<ul style="list-style-type: none"> <li>on how to maintain adequate mechanical stability when in use, during transportation, assembly, dismantling, scrapping and any other action involving the appliance</li> </ul>		N/A
	<ul style="list-style-type: none"> <li>on the protective measures to be taken by the user, including, where appropriate, the personal protective equipment to be provided</li> </ul>		N/A
	<ul style="list-style-type: none"> <li>on the operating method to be followed in the event of accident or breakdown; if a blockage is likely to occur the operating method to safely unblock the appliance</li> </ul>		N/A
	<ul style="list-style-type: none"> <li>on the specifications on the spare parts to be used, when these affect the health and safety of the operator</li> </ul>		N/A
	<ul style="list-style-type: none"> <li>on airborne noise emissions, determined and declared in accordance with the relevant Part 2, which includes:</li> </ul>		—
	- the A-weighted emission sound pressure level at workstations, where this exceeds 70 dB(A) .....		N/A
	- where this level does not exceed 70 dB(A), this fact is indicated		N/A
	- the peak C-weighted instantaneous sound pressure value at workstations, where this exceeds 63 Pa (130 dB in relation to 20 µPa) .....		N/A
	- the A-weighted sound power level emitted by the machinery, where the A-weighted emission sound pressure level at workstations exceeds 80 dB(A) .....		N/A
7.12.ZE2	The instructions includes a warning to disconnect the appliance from its power source during service and when replacing parts		N/A



# TEST REPORT N°: RIK-16DE0422HTSP

	If the removal of the plug is foreseen, it is clearly indicated that the removal of the plug has to be such that an operator can check from any of the points to which he has access that the plug remains removed		N/A
	If this is not possible, due to the construction of the appliance or its installation, a disconnection with a locking system in the isolated position is provided		N/A
19.11.4.8	The appliance continues to operate, without causing any hazard to the user, from the same point in its operating cycle at which the voltage fluctuation occurred, or		N/A
	a manual operation is required to restart it		N/A
20.1	Appliances and their components and fittings have adequate mechanical stability during transportation, assembly, dismantling and any other action involving the appliance		N/A
20.2	Dangerous moving transmission parts safeguarded either by design or guards		N/A
	When guards are used, they are fixed guards, interlocking movable guards or protective devices		N/A
	Moving parts directly involved in the function of the appliance which cannot be made completely inaccessible fitted with:		—
	- fixed guards or interlocking movable guards preventing access to those sections of the parts that are not used in the work, and		N/A
	- adjustable guards restricting access to those sections of the moving parts where access is necessary		N/A
	Interlocking movable guards used where frequent access is required		N/A
21.1	Appliances and their components and fittings have adequate mechanical strength and is constructed to withstand such rough handling that may be expected in normal use, during transportation, assembly, dismantling, scrapping and any other action involving the appliance		N/A
22.ZE.1	For appliances provided with a seat, the seat gives adequate stability		N/A



# **TEST REPORT N°: RIK-16DE0422HTSP**

	The distance between the seat and the control devices capable of being adapted to the operator		N/A
22.ZE.2	For appliances provided with separate devices for the start and the stop functions, the stop function is unambiguously identifiable and does always override the start function		N/A
	For appliances provided with one device performing the start and the stop function, the stop function is unambiguously identifiable and does always override the start function		N/A
22.ZE.3	Appliances designed in such a way that incorrect mounting is avoided, if this can lead to an unsafe situation		N/A
	If this is not possible, information on the correct mounting is given directly on the part and/or the enclosure		N/A
22.ZE.4	Where the weight, size or shape prevents appliances from being moved manually, they are fitted with attachments for lifting gear, or		N/A
	so designed that they can be fitted with such attachments, or		N/A
	be shaped in such a way that standard lifting gear can easily be used		N/A
	Appliances to be moved manually are constructed or equipped so that they can be moved easily and safely		N/A
22.ZE.5	The fixing systems of fixed guards which prevent access to dangerous moving transmission parts only removable with the use of tools		N/A
	If such guards have to be removed by the user for routine cleaning or maintenance their fixing systems remain attached to the fixed guards or to the machine after removal		N/A
	Where possible, guards are incapable of remaining in place without their fixings		N/A
	This does not apply if, after removal of the screws, or if the component is incorrectly repositioned, the appliance becomes inoperative		N/A
	Movable guards are interlocked		N/A



# TEST REPORT N°: RIK-16DE0422HTSP

	The interlocking devices prevent the start of hazardous appliance functions until the guards are fixed in their position, and give a stop command whenever they are no longer closed		N/A
	Where it is possible for an operator to reach the danger zone before the risk due to hazardous appliance functions has ceased, movable guards associated with a guard locking device in addition to an interlocking device that:		—
	- prevents the start of hazardous appliance functions until the guard is closed and locked, and		N/A
	- keeps the guard closed and locked until the risk of injury from the hazardous appliance functions has ceased		N/A
	Interlocking movable guards remain attached to the appliance when open, and		N/A
	they are designed and constructed in such a way that they can be adjusted only by means of an intentional action		N/A
22.ZE.6	Interlocking movable guards designed in such a way that the absence or failure of one of their components prevents starting or stops the hazardous appliance functions		N/A
	The guard is opened to the extent needed to cause the interlocking to operate and is then closed, the number of operations being defined in the specific Part 2 .....		N/A
	After this test any defect that may be expected in normal use is applied to the interlock system, including interruption of the supply, only one defect being simulated at a time		N/A
	After these tests the interlock system is fit for further use		N/A
22.ZE.7	Adjustable guards restricting access to areas of the moving parts strictly necessary for the work are:		—
	- adjustable manually or automatically, depending on the type of work involved, and		N/A
	- readily adjustable without the use of tools		N/A
22.ZE.8	In case of interruption, re-establishment after an interruption or fluctuation in whatever manner of the power supply, the appliance does not restart		N/A



**TEST REPORT N°: RIK-16DE0422HTSP**

	However, automatic restarting of the operation is allowed if the appliance may continue to operate, without causing any hazard to the user, from the same point in its operating cycle at which the voltage interruption or fluctuation occurred		N/A
22.ZE.9	Appliances fitted with means to isolate them from all energy sources		N/A
	Such isolators are clearly identified, and		N/A
	they are capable of being locked if reconnection endanger persons		N/A
	After the energy source is disconnected, it is possible to dissipate any energy remaining or stored in the circuits of the appliance without risk to persons		N/A
<b>ZF</b>	<b>ANNEX ZF (INFORMATIVE) CRITERIA APPLIED FOR THE ALLOCATION OF PRODUCTS COVERED BY STANDARDS IN THE EN 60335 SERIES UNDER LVD OR MD</b>		—
	List of standards under CENELEC/TC61 with the allocation under the LVD (Low Voltage Directive) or the MD (Machinery Directive) .....	LVD	P
<b>ZG</b>	<b>ANNEX ZG (NORMATIVE) UV APPLIANCES</b>		—
	The following modifications to this standard apply to appliances having UV emitters		N/A
	This annex is not applicable to appliances covered by the scopes of IEC 60335-2-27, IEC 60335-2-59 or IEC 60335-2-109		N/A
7.12.ZG	The instructions for appliances incorporating UVC emitters include the substance of the following: WARNING — This appliance contains a UV emitter. Do not stare at the light source		N/A
32	For appliances incorporating UV emitters the manufacturer delivers a declaration providing evidence that the plastic material exposed to the radiation is UV resistant		N/A
<b>ZZ</b>	<b>ANNEX ZZ (INFORMATIVE) COVERAGE OF ESSENTIAL REQUIREMENTS OF EC DIRECTIVES</b>		—



**TEST REPORT N°: RIK-16DE0422HTSP**

	Description of the relation between this European standard and the LVD (Low Voltage Directive, 2006/95/EC) and the MD (Machinery Directive, 2006/42/EC)	Low Voltage Directive 2014/35/EU	P
--	---	----------------------------------	---

<b>Annex EN 62233:2008</b>			
EMF- ELECTROMAGNETICS FIELDS			
	The tested product also complies with the requirements of EN 62233:2008		—
	Limit .....100%	Measured max. : 4,85 %	P

**Appendix 2: EN 60335-1/A11:2014**

EN 60335-1:2012/A11:2014			
Clause	Requirement – Test	Result - Remark	Verdict
<b>7</b>	<b>Marking and instructions</b>		--
7.14	In NOTE Z1, replace "IEC 82079-1" by "EN 82079-1".		P

<End of report>